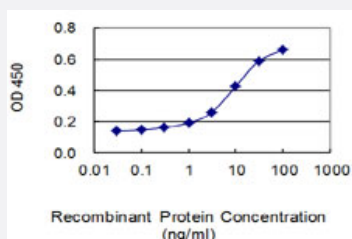


BMP2K monoclonal antibody (M04), clone 4B19

Catalog # H00055589-M04

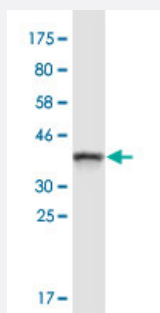
Size 100 ug

Applications



Sandwich ELISA (Recombinant protein)

Detection limit for recombinant GST tagged BMP2K is 0.3 ng/ml as a capture antibody.



Western Blot detection against Immunogen (37.84 KDa) .

Specification

Product Description

Mouse monoclonal antibody raised against a partial recombinant BMP2K.

Immunogen

BMP2K (AAH36021, 540 a.a. ~ 650 a.a) partial recombinant protein with GST tag. MW of the GST tag alone is 26 KDa.

Sequence

YQQAFFQQQMLAQHQPSQQQASPEYLTSPQEFSPALVSYTSSLPAQVGTIMDSSYSANRSVADK
EAIANFTNQKNISNPPDMSGWNPFGEDNFSKLTEEELLDREFDLLRS

Host

Mouse

Reactivity

Human

Interspecies Antigen Sequence	Mouse (88)
Isotype	IgG2a Kappa
Quality Control Testing	Antibody Reactive Against Recombinant Protein. Western Blot detection against Immunogen (37.84 KDa) .
Storage Buffer	In 1x PBS, pH 7.4
Storage Instruction	Store at -20°C or lower. Aliquot to avoid repeated freezing and thawing.

Applications

- Western Blot (Recombinant protein)

[Protocol Download](#)

- Sandwich ELISA (Recombinant protein)

Detection limit for recombinant GST tagged BMP2K is 0.3 ng/ml as a capture antibody.

[Protocol Download](#)

- ELISA

Gene Info — BMP2K

Entrez GeneID	55589
GeneBank Accession#	BC036021
Protein Accession#	AAH36021
Gene Name	BMP2K
Gene Alias	BIKE, DKFZp434K0614, DKFZp434P0116, HRIHFB2017
Gene Description	BMP2 inducible kinase
Gene Ontology	Hyperlink

Gene Summary

This gene is the human homolog of mouse BMP-2-inducible kinase. Bone morphogenic proteins (BMPs) play a key role in skeletal development and patterning. Expression of the mouse gene is increased during BMP-2 induced differentiation and the gene product is a putative serine/threonine protein kinase containing a nuclear localization signal. Therefore, the protein encoded by this human homolog is thought to be a protein kinase with a putative regulatory role in attenuating the program of osteoblast differentiation. Two transcript variants encoding different isoforms have been found for this gene. [provided by RefSeq]

Other Designations

BMP-2 inducible kinase

Disease

- [Genetic Predisposition to Disease](#)
- [Myopia](#)