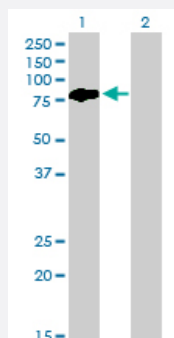


BMP2K monoclonal antibody (M03), clone X1

Catalog # H00055589-M03

Size 100 ug

Applications

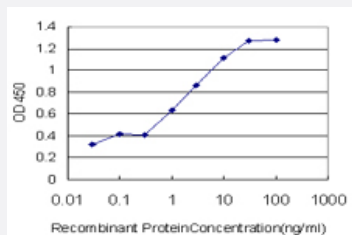


Western Blot (Transfected lysate)

Western Blot analysis of BMP2K expression in transfected 293T cell line by BMP2K monoclonal antibody (M03), clone X1.

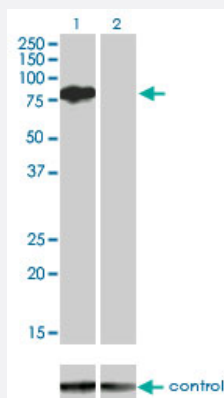
Lane 1: BMP2K transfected lysate (73.9 kDa).

Lane 2: Non-transfected lysate.



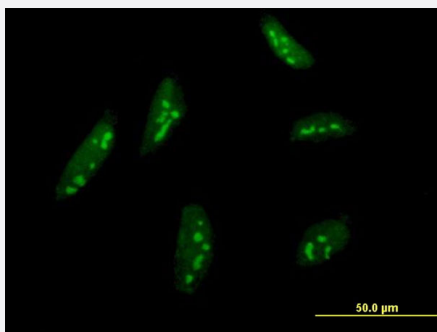
Sandwich ELISA (Recombinant protein)

Detection limit for recombinant GST tagged BMP2K is approximately 0.1 ng/ml as a capture antibody.



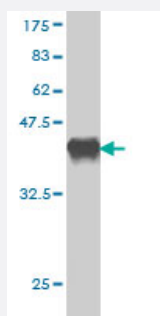
RNAi Knockdown (Antibody validated)

Western blot analysis of BMP2K over-expressed 293 cell line, cotransfected with BMP2K Validated Chimera RNAi (Cat # H00055589-R01V) (Lane 2) or non-transfected control (Lane 1). Blot probed with BMP2K monoclonal antibody (M03) clone X1 (Cat # H00055589-M03). GAPDH (36.1 kDa) used as specificity and loading control.



Immunofluorescence

Immunofluorescence of monoclonal antibody to BMP2K on HeLa cell .
[antibody concentration 10 ug/ml]



Western Blot detection against Immunogen (37.84 KDa) .

Specification

Product Description	Mouse monoclonal antibody raised against a partial recombinant BMP2K.
Immunogen	BMP2K (AAH36021, 540 a.a. ~ 650 a.a) partial recombinant protein with GST tag. MW of the GST tag alone is 26 KDa.
Sequence	YQQAFFQQQMLAQHQPSQQQASPEYLTSPQEFSPALVSYTSSLPAQVGTIMDSSYSANRSVADK EAIANFTNQKNISNPPDMSGWNPFGEDNFSKLTEEELLDREFDLLRS
Host	Mouse
Reactivity	Human
Interspecies Antigen Sequence	Mouse (88)
Isotype	IgG2a Kappa
Quality Control Testing	Antibody Reactive Against Recombinant Protein. Western Blot detection against Immunogen (37.84 KDa) .
Storage Buffer	In 1x PBS, pH 7.4
Storage Instruction	Store at -20°C or lower. Aliquot to avoid repeated freezing and thawing.

Applications

- Western Blot (Transfected lysate)

Western Blot analysis of BMP2K expression in transfected 293T cell line by BMP2K monoclonal antibody (M03), clone X1.

Lane 1: BMP2K transfected lysate(73.9 KDa).

Lane 2: Non-transfected lysate.

[Protocol Download](#)

- Western Blot (Recombinant protein)

[Protocol Download](#)

- Sandwich ELISA (Recombinant protein)

Detection limit for recombinant GST tagged BMP2K is approximately 0.1ng/ml as a capture antibody.

[Protocol Download](#)

- ELISA

- RNAi Knockdown (Antibody validated)

Western blot analysis of BMP2K over-expressed 293 cell line, cotransfected with BMP2K Validated Chimera RNAi (Cat # H00055589-R01V) (Lane 2) or non-transfected control (Lane 1). Blot probed with BMP2K monoclonal antibody (M03) clone X1 (Cat # H00055589-M03). GAPDH (36.1 kDa) used as specificity and loading control.

[Protocol Download](#)

- Immunofluorescence

Immunofluorescence of monoclonal antibody to BMP2K on HeLa cell . [antibody concentration 10 ug/ml]

Gene Info — BMP2K

Entrez GeneID	55589
---------------	-----------------------

GeneBank Accession#	BC036021
---------------------	--------------------------

Protein Accession#	AAH36021
--------------------	--------------------------

Gene Name	BMP2K
-----------	-------

Gene Alias	BIKE, DKFZp434K0614, DKFZp434P0116, HRIHFB2017
------------	--

Gene Description	BMP2 inducible kinase
------------------	-----------------------

Gene Ontology	Hyperlink
---------------	---------------------------

Gene Summary	<p>This gene is the human homolog of mouse BMP-2-inducible kinase. Bone morphogenic proteins (BMPs) play a key role in skeletal development and patterning. Expression of the mouse gene is increased during BMP-2 induced differentiation and the gene product is a putative serine/threonine protein kinase containing a nuclear localization signal. Therefore, the protein encoded by this human homolog is thought to be a protein kinase with a putative regulatory role in attenuating the program of osteoblast differentiation. Two transcript variants encoding different isoforms have been found for this gene. [provided by RefSeq]</p>
--------------	--

Other Designations	BMP-2 inducible kinase
--------------------	------------------------

Disease

- [Genetic Predisposition to Disease](#)
- [Myopia](#)