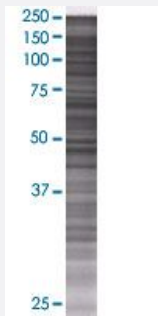


UBE2Q1 293T Cell Transient Overexpression Lysate(Denatured)

Catalog # H00055585-T01

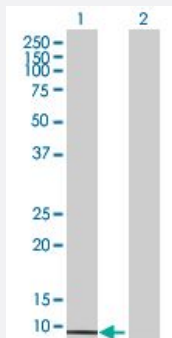
Size 100 uL

Applications



SDS-PAGE Gel

UBE2Q1 transfected lysate.



Western Blot

Lane 1: UBE2Q1 transfected lysate (7.92 KDa)

Lane 2: Non-transfected lysate.

Specification

Transfected Cell Line	293T
Plasmid	pCMV-UBE2Q1 full-length
Host	Human
Theoretical MW (kDa)	7.92
Interspecies Antigen Sequence	Mouse (100); Rat (100)

Quality Control Testing

Transient overexpression cell lysate was tested with Anti-UBE2Q1 antibody ([H00055585-B01](#)) by Western Blots.
SDS-PAGE Gel
UBE2Q1 transfected lysate.
Western Blot
Lane 1: UBE2Q1 transfected lysate (7.92 KDa)
Lane 2: Non-transfected lysate.

Storage Buffer

1X Sample Buffer (50 mM Tris-HCl, 2% SDS, 10% glycerol, 300 mM 2-mercaptoethanol, 0.01% Bromophenol blue)

Storage Instruction

Store at -80°C. Aliquot to avoid repeated freezing and thawing.

Applications

- Western Blot

Gene Info — UBE2Q1

Entrez GeneID

[55585](#)

GeneBank Accession#

[BC015316.1](#)

Protein Accession#

[AAH15316.1](#)

Gene Name

UBE2Q1

Gene Alias

GTAP, NICE-5, PRO3094, UBE2Q

Gene Description

ubiquitin-conjugating enzyme E2Q family member 1

Gene Ontology

[Hyperlink](#)

Gene Summary

The modification of proteins with ubiquitin is an important cellular mechanism for targeting abnormal or short-lived proteins for degradation. Ubiquitination involves at least three classes of enzymes: ubiquitin-activating enzymes (E1s), ubiquitin-conjugating enzymes (E2s), and ubiquitin-protein ligases (E3s). This gene encodes a member of the E2 ubiquitin-conjugating enzyme family. The encoded protein is 98% identical to the mouse counterpart. [provided by RefSeq]

Other Designations

OTTHUMP00000035378|galactosyl transferase-associated protein|ubiquitin-conjugating enzyme E2Q|ubiquitin-conjugating enzyme E2Q (putative) 1

Pathway

- [Ubiquitin mediated proteolysis](#)