

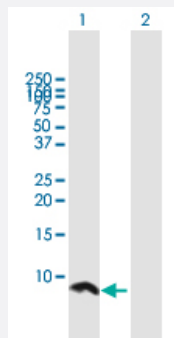
MaxPab®

# UBE2Q1 MaxPab mouse polyclonal antibody (B01)

Catalog # H00055585-B01

Size 50 uL

## Applications



### Western Blot (Transfected lysate)

Western Blot analysis of UBE2Q1 expression in transfected 293T cell line ([H00055585-T01](#)) by UBE2Q1 MaxPab polyclonal antibody.

Lane 1: UBE2Q1 transfected lysate(7.81 KDa).

Lane 2: Non-transfected lysate.

## Specification

Product Description	Mouse polyclonal antibody raised against a full-length human UBE2Q1 protein.
Immunogen	UBE2Q1 (AAH15316.1, 1 a.a. ~ 71 a.a) full-length human protein.
Sequence	MELLTKQGWSAYSIESVIMQISATLVKGKARVQFGANKSQYSLTRAQQSYKSLVQIHEKNGWYTPPKEDG
Host	Mouse
Reactivity	Human
Interspecies Antigen Sequence	Mouse (100); Rat (100)
Quality Control Testing	Antibody reactive against mammalian transfected lysate.
Storage Buffer	No additive
Storage Instruction	Store at -20°C or lower. Aliquot to avoid repeated freezing and thawing.
Note	For IHC and IF applications, antibody purification with Protein A will be needed prior to use.

## Applications

- Western Blot (Transfected lysate)

Western Blot analysis of UBE2Q1 expression in transfected 293T cell line ([H00055585-T01](#)) by UBE2Q1 MaxPab polyclonal antibody.

Lane 1: UBE2Q1 transfected lysate(7.81 KDa).

Lane 2: Non-transfected lysate.

[Protocol Download](#)

## Gene Info — UBE2Q1

Entrez GeneID [55585](#)

GeneBank Accession# [BC015316.1](#)

Protein Accession# [AAH15316.1](#)

Gene Name UBE2Q1

Gene Alias GTAP, NICE-5, PRO3094, UBE2Q

Gene Description ubiquitin-conjugating enzyme E2Q family member 1

Gene Ontology [Hyperlink](#)

**Gene Summary** The modification of proteins with ubiquitin is an important cellular mechanism for targeting abnormal or short-lived proteins for degradation. Ubiquitination involves at least three classes of enzymes: ubiquitin-activating enzymes (E1s), ubiquitin-conjugating enzymes (E2s), and ubiquitin-protein ligases (E3s). This gene encodes a member of the E2 ubiquitin-conjugating enzyme family. The encoded protein is 98% identical to the mouse counterpart. [provided by RefSeq]

**Other Designations** OTTHUMP00000035378|galactosyl transferase-associated protein|ubiquitin-conjugating enzyme E2Q|ubiquitin-conjugating enzyme E2Q (putative) 1

## Pathway

- [Ubiquitin mediated proteolysis](#)