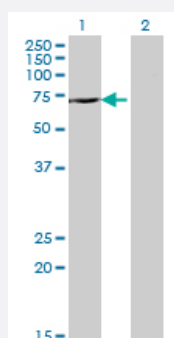


# DDX43 monoclonal antibody (M07), clone 3G12

Catalog # H00055510-M07

Size 100 ug

## Applications

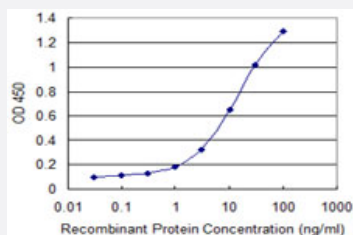


### Western Blot (Transfected lysate)

Western Blot analysis of DDX43 expression in transfected 293T cell line by DDX43 monoclonal antibody (M07), clone 3G12.

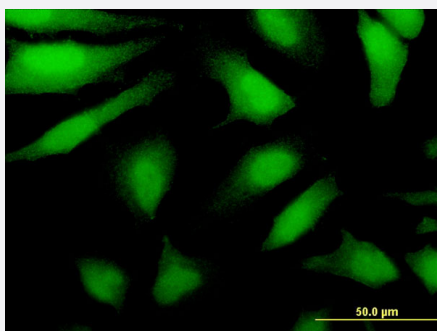
Lane 1: DDX43 transfected lysate (72.9 kDa).

Lane 2: Non-transfected lysate.



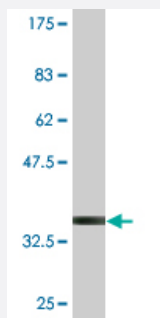
### Sandwich ELISA (Recombinant protein)

Detection limit for recombinant GST tagged DDX43 is 0.3 ng/ml as a capture antibody.



### Immunofluorescence

Immunofluorescence of monoclonal antibody to DDX43 on HeLa cell . [antibody concentration 10 ug/ml]



Western Blot detection against Immunogen (35.53 KDa) .

## Specification

<b>Product Description</b>	Mouse monoclonal antibody raised against a partial recombinant DDX43.
<b>Immunogen</b>	DDX43 (NP_061135.1, 2 a.a. ~ 90 a.a) partial recombinant protein with GST tag. MW of the GST tag alone is 26 KDa.
<b>Sequence</b>	SHHGGAPKASTWVVASRRSSTVSRAPERRPAEELNRTGPEGYSVGRGGRWRGTSRPPEAVAA GHEELPLCFALKSHFVGAVIGRGSKI
<b>Host</b>	Mouse
<b>Reactivity</b>	Human
<b>Interspecies Antigen Sequence</b>	Mouse (57); Rat (56)
<b>Isotype</b>	IgG2a Kappa
<b>Quality Control Testing</b>	Antibody Reactive Against Recombinant Protein. Western Blot detection against Immunogen (35.53 KDa) .
<b>Storage Buffer</b>	In 1x PBS, pH 7.4
<b>Storage Instruction</b>	Store at -20°C or lower. Aliquot to avoid repeated freezing and thawing.

## Applications

### ● Western Blot (Transfected lysate)

Western Blot analysis of DDX43 expression in transfected 293T cell line by DDX43 monoclonal antibody (M07), clone 3G12.

Lane 1: DDX43 transfected lysate(72.9 KDa).

Lane 2: Non-transfected lysate.

[Protocol Download](#)

- Western Blot (Recombinant protein)

[Protocol Download](#)

- Sandwich ELISA (Recombinant protein)

Detection limit for recombinant GST tagged DDX43 is 0.3 ng/ml as a capture antibody.

[Protocol Download](#)

- ELISA

- Immunofluorescence

Immunofluorescence of monoclonal antibody to DDX43 on HeLa cell . [antibody concentration 10 ug/ml]

## Gene Info — DDX43

Entrez GeneID [55510](#)

GeneBank Accession# [NM\\_018665](#)

Protein Accession# [NP\\_061135.1](#)

Gene Name DDX43

Gene Alias DKFZp434H2114, HAGE

Gene Description DEAD (Asp-Glu-Ala-Asp) box polypeptide 43

Omim ID [606286](#)

Gene Ontology [Hyperlink](#)

Gene Summary The protein encoded by this gene is an ATP-dependent RNA helicase in the DEAD-box family and displays tumor-specific expression. [provided by RefSeq]

Other Designations DEAD-box protein 43|OTTHUMP00000016742

## Publication Reference

- [Arresting of miR-186 and releasing of H19 by DDX43 facilitate tumorigenesis and CML progression.](#)

Lin J, Ma JC, Yang J, Yin JY, Chen XX, Guo H, Wen XM, Zhang TJ, Qian W, Qian J, Deng ZQ.

Oncogene 2018 May; 37(18):2432.

Application: WB-Ce, Human, K562 cells