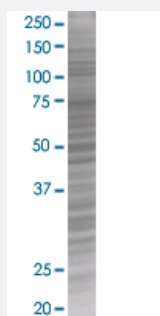


# GPRC5D 293T Cell Transient Overexpression Lysate(Denatured)

Catalog # H00055507-T01

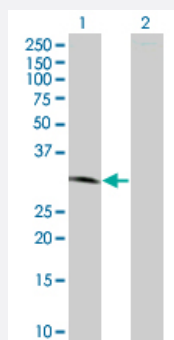
Size 100 uL

## Applications



### SDS-PAGE Gel

GPRC5D transfected lysate.



### Western Blot

Lane 1: GPRC5D transfected lysate ( 38.8 KDa)

Lane 2: Non-transfected lysate.

## Specification

Transfected Cell Line	293T
Plasmid	pCMV-GPRC5D full-length
Host	Human
Theoretical MW (kDa)	38.8
Interspecies Antigen Sequence	Mouse (82); Rat (83)

**Quality Control Testing**

Transient overexpression cell lysate was tested with Anti-GPRC5D antibody ([H00055507-B01](#)) by Western Blots.  
SDS-PAGE Gel  
GPRC5D transfected lysate.  
Western Blot  
Lane 1: GPRC5D transfected lysate ( 38.8 KDa)  
Lane 2: Non-transfected lysate.

**Storage Buffer**

1X Sample Buffer (50 mM Tris-HCl, 2% SDS, 10% glycerol, 300 mM 2-mercaptoethanol, 0.01% Bromophenol blue)

**Storage Instruction**

Store at -80°C. Aliquot to avoid repeated freezing and thawing.

## Applications

- Western Blot

## Gene Info — GPRC5D

**Entrez GeneID** [55507](#)

**GeneBank Accession#** [NM\\_018654](#)

**Protein Accession#** [NP\\_061124](#)

**Gene Name** GPRC5D

**Gene Alias** MGC129713, MGC129714

**Gene Description** G protein-coupled receptor, family C, group 5, member D

**Omim ID** [607437](#)

**Gene Ontology** [Hyperlink](#)

**Gene Summary** The protein encoded by this gene is a member of the G protein-coupled receptor family; however, the specific function of this gene has not yet been determined. [provided by RefSeq]

**Other Designations** orphan G-protein coupled receptor

## Disease

- [Genetic Predisposition to Disease](#)

- [Hyperparathyroidism](#)