

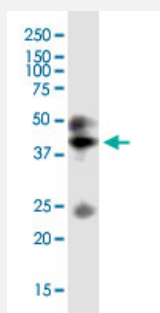
CX Grade

## GPRC5D monoclonal antibody (M01J), clone 6D9

Catalog # H00055507-M01J

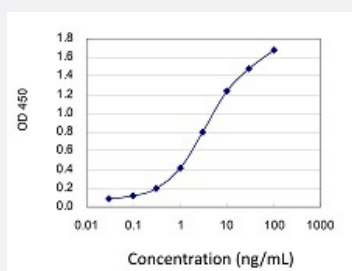
Size 100 ug

### Applications



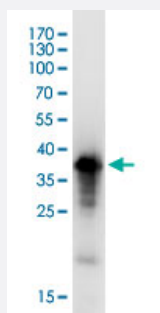
#### Western Blot (Tissue lysate)

GPRC5D monoclonal antibody (M01J), clone 6D9. Western Blot analysis of GPRC5D expression in human kidney.



#### Sandwich ELISA (Recombinant protein)

Detection limit for recombinant GST tagged GPRC5D is 0.03 ng/ml as a capture antibody.



Western Blot detection against Immunogen (35.09 KDa) .

### Specification

#### Product Description

Mouse monoclonal antibody raised against a partial recombinant GPRC5D. This product is belong to Cell Culture Grade Antibody (CX Grade).

<b>Immunogen</b>	GPRC5D (NP_061124, 261 a.a. ~ 345 a.a) partial recombinant protein with GST tag. MW of the GST tag alone is 26 KDa.
<b>Sequence</b>	ELCILYRSCRQECPLQGNACPVTAYQHSHFQVENQELSRARDSDGAEEDVALTSYGTPIQPQTVDPTQECFIPQAKLSPQQDAGGV
<b>Host</b>	Mouse
<b>Reactivity</b>	Human
<b>Interspecies Antigen Sequence</b>	Mouse (71); Rat (74)
<b>Preparation Method</b>	Cell Culture Production
<b>Isotype</b>	IgG2b Kappa
<b>Quality Control Testing</b>	Antibody Reactive Against Recombinant Protein. Western Blot detection against Immunogen (35.09 KDa) .
<b>Storage Buffer</b>	In 1x PBS, pH 7.4
<b>Storage Instruction</b>	Store at -20°C or lower. Aliquot to avoid repeated freezing and thawing.

## Applications

- Western Blot (Tissue lysate)

GPRC5D monoclonal antibody (M01J), clone 6D9. Western Blot analysis of GPRC5D expression in human kidney.

[Protocol Download](#)

- Western Blot (Recombinant protein)

[Protocol Download](#)

- Sandwich ELISA (Recombinant protein)

Detection limit for recombinant GST tagged GPRC5D is 0.03 ng/ml as a capture antibody.

[Protocol Download](#)

- ELISA

## Gene Info — GPRC5D

Entrez GeneID

[55507](#)

GeneBank Accession#	<a href="#">NM_018654</a>
Protein Accession#	<a href="#">NP_061124</a>
Gene Name	GPRC5D
Gene Alias	MGC129713, MGC129714
Gene Description	G protein-coupled receptor, family C, group 5, member D
Omim ID	<a href="#">607437</a>
Gene Ontology	<a href="#">Hyperlink</a>
Gene Summary	The protein encoded by this gene is a member of the G protein-coupled receptor family; however, the specific function of this gene has not yet been determined. [provided by RefSeq]
Other Designations	orphan G-protein coupled receptor

## Disease

- [Genetic Predisposition to Disease](#)
- [Hyperparathyroidism](#)