

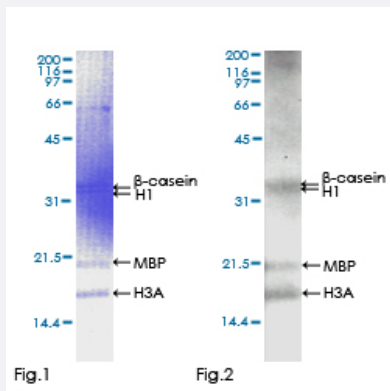
Full-Length

STRADB (Human) Recombinant Protein (P01)

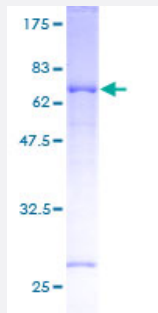
Catalog # H00055437-P01

Size 25 ug, 10 ug

Applications



Kinase Assay



Specification

Product Description

Human STRADB full-length ORF (AAH08302, 1 a.a. - 418 a.a.) recombinant protein with GST-tag at N-terminal.

Sequence

MSLLDCFCTSRQTQVESLRPEKQSETSIHQYLVDEPTLSWSRPSTRASEVLCSTNVSHYELQVEIG
RGFDNLTSVHLARHTPTGTLVTIKITNLENCNEERLKALQKAVILSHFFRHPNITTYWTVFTVGSWLW
VISPFMAYGSASQLLRITYFPEGMSETLIRNILFGAVRGLNYLHQNGCIHRSIKASHILISGDGLVTLTG
LSHLHSLVKHGRHRAVYDFPQFSTSVQPWLSPELLRQDLHGYNVKSIDIYSGITACELASGQVP
FQDMHRTQMLLQKLKGPPYSPDLISIFPQSES RMKNSQSGVDSGIGESVLVSSGTHTVNSDRLHT
PSSKTFSPAFFSLVQLCLQQDPEKRPSASSLLSHVFFKQMKEESQDSILSLLPPAYNKPSISLPP
VLPWTEPECDFPDEKDSYWEF

Host	Wheat Germ (in vitro)
Theoretical MW (kDa)	71.72
Interspecies Antigen Sequence	Mouse (90); Rat (89)
Preparation Method	in vitro wheat germ expression system
Purification	Glutathione Sepharose 4 Fast Flow
Quality Control Testing	12.5% SDS-PAGE Stained with Coomassie Blue.
Storage Buffer	50 mM Tris-HCl, 10 mM reduced Glutathione, pH=8.0 in the elution buffer.
Storage Instruction	Store at -80°C. Aliquot to avoid repeated freezing and thawing.
Note	Best use within three months from the date of receipt of this protein.

Applications

- Kinase Assay

[Protocol Download](#)

- Enzyme-linked Immunoabsorbent Assay
- Western Blot (Recombinant protein)
- Antibody Production
- Protein Array

Gene Info — STRADB

Entrez GeneID	55437
GeneBank Accession#	BC008302
Protein Accession#	AAH08302
Gene Name	STRADB
Gene Alias	ALS2CR2, CALS-21, ILPIP, ILPIPA, MGC102916, PAPK, PRO1038

Gene Description	STE20-related kinase adaptor beta
Omim ID	607333
Gene Ontology	Hyperlink
Gene Summary	<p>This gene encodes a protein that belongs to the serine/threonine protein kinase STE20 subfamily. One of the active site residues in the protein kinase domain of this protein is altered, and it is thus a pseudokinase. This protein is a component of a complex involved in the activation of serine/threonine kinase 11, a master kinase that regulates cell polarity and energy-generating metabolism. This complex regulates the relocation of this kinase from the nucleus to the cytoplasm, and it is essential for G1 cell cycle arrest mediated by this kinase. The protein encoded by this gene can also interact with the X chromosome-linked inhibitor of apoptosis protein, and this interaction enhances the anti-apoptotic activity of this protein via the JNK1 signal transduction pathway. Two pseudogenes, located on chromosomes 1 and 7, have been found for this gene. [provided by RefSeq]</p>
Other Designations	ILP-interacting protein ILIPA STRAD beta amyotrophic lateral sclerosis 2 (juvenile) chromosome region, candidate 2 pseudokinase ALS2CR2