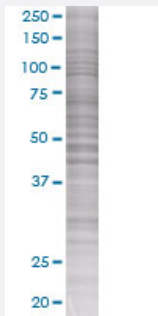


SIRPG 293T Cell Transient Overexpression Lysate(Denatured)

Catalog # H00055423-T01

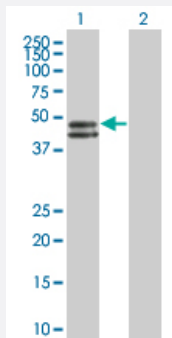
Size 100 uL

Applications



SDS-PAGE Gel

SIRPG transfected lysate.



Western Blot

Lane 1: SIRPG transfected lysate (42.5 KDa)

Lane 2: Non-transfected lysate.

Specification

Transfected Cell Line 293T

Plasmid pCMV-SIRPG full-length

Host Human

Theoretical MW (kDa) 42.68

Quality Control Testing Transient overexpression cell lysate was tested with Anti-SIRPG antibody ([H00055423-B01](#)) by Western Blots.
 SDS-PAGE Gel
 SIRPG transfected lysate.
 Western Blot
 Lane 1: SIRPG transfected lysate (42.5 KDa)
 Lane 2: Non-transfected lysate.

Storage Buffer

1X Sample Buffer (50 mM Tris-HCl, 2% SDS, 10% glycerol, 300 mM 2-mercaptoethanol, 0.01% Bromophenol blue)

Storage Instruction

Store at -80°C. Aliquot to avoid repeated freezing and thawing.

Applications

- Western Blot

Gene Info — SIRPG

Entrez GeneID[55423](#)**GeneBank Accession#**[NM_018556](#)**Protein Accession#**[NP_061026](#)**Gene Name**

SIRPG

Gene Alias

CD172g, SIRP-B2, SIRPB2, SIRPgamma, bA77C3.1

Gene Description

signal-regulatory protein gamma

Omim ID[605466](#)**Gene Ontology**[Hyperlink](#)**Gene Summary**

The protein encoded by this gene is a member of the signal-regulatory protein (SIRP) family, and also belongs to the immunoglobulin superfamily. SIRP family members are receptor-type transmembrane glycoproteins known to be involved in the negative regulation of receptor tyrosine kinase-coupled signaling processes. Alternatively spliced transcript variants encoding different isoforms have been described. [provided by RefSeq]

Other Designations

CD172g antigen|OTTHUMP00000030000|OTTHUMP00000185041|SIRP beta 2|signal-regulatory protein beta 2