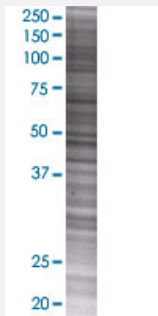


# MCM10 293T Cell Transient Overexpression Lysate(Denatured)

Catalog # H00055388-T01

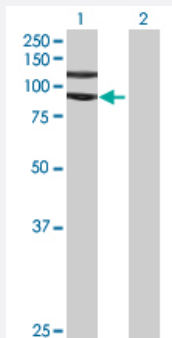
Size 100 uL

## Applications



### SDS-PAGE Gel

MCM10 transfected lysate.



### Western Blot

Lane 1: MCM10 transfected lysate ( 96.25 KDa)

Lane 2: Non-transfected lysate.

## Specification

Transfected Cell Line	293T
Plasmid	pCMV-MCM10 full-length
Host	Human
Theoretical MW (kDa)	96.25
Interspecies Antigen Sequence	Mouse (74); Rat (76)

**Quality Control Testing**

Transient overexpression cell lysate was tested with Anti-MCM10 antibody ([H00055388-B01](#)) by Western Blots.  
SDS-PAGE Gel  
MCM10 transfected lysate.  
Western Blot  
Lane 1: MCM10 transfected lysate ( 96.25 KDa)  
Lane 2: Non-transfected lysate.

**Storage Buffer**

1X Sample Buffer (50 mM Tris-HCl, 2% SDS, 10% glycerol, 300 mM 2-mercaptoethanol, 0.01% Bromophenol blue)

**Storage Instruction**

Store at -80°C. Aliquot to avoid repeated freezing and thawing.

## Applications

- Western Blot

## Gene Info — MCM10

**Entrez GeneID**[55388](#)**GeneBank Accession#**[NM\\_018518.3](#)**Protein Accession#**[NP\\_060988.3](#)**Gene Name**

MCM10

**Gene Alias**

CNA43, DNA43, MGC126776, PRO2249

**Gene Description**

minichromosome maintenance complex component 10

**Omim ID**[609357](#)**Gene Ontology**[Hyperlink](#)**Gene Summary**

The protein encoded by this gene is one of the highly conserved mini-chromosome maintenance proteins (MCM) that are involved in the initiation of eukaryotic genome replication. The hexameric protein complex formed by MCM proteins is a key component of the pre-replication complex (pre-RC) and it may be involved in the formation of replication forks and in the recruitment of other DNA replication related proteins. This protein can interact with MCM2 and MCM6, as well as with the origin recognition protein ORC2. It is regulated by proteolysis and phosphorylation in a cell cycle-dependent manner. Studies of a similar protein in *Xenopus* suggest that the chromatin binding of this protein at the onset of DNA replication is after pre-RC assembly and before origin unwinding. Alternatively spliced transcript variants encoding distinct isoforms have been identified. [provided by RefSeq]

**Other Designations**

MCM10 minichromosome maintenance deficient 10|OTTHUMP00000019133|homolog of yeast MCM10

**Disease**

- [Alzheimer Disease](#)
- [Brain Ischemia](#)
- [Cardiovascular Diseases](#)
- [Coronary Disease](#)
- [Diabetes Mellitus](#)
- [Genetic Predisposition to Disease](#)
- [Myocardial Infarction](#)
- [Stroke](#)
- [Tobacco Use Disorder](#)