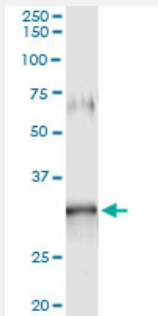


# GIMAP5 (Human) IP-WB Antibody Pair

Catalog # H00055340-PW3

Size 1 Set

## Applications



Immunoprecipitation of GIMAP5 transfected lysate using mouse monoclonal anti-GIMAP5 and Protein A Magnetic Bead ([U0007](#)), and immunoblotted with rabbit polyclonal anti-GIMAP5.

## Specification

<b>Product Description</b>	This IP-WB antibody pair set comes with one antibody for immunoprecipitation and another to detect the precipitated protein in western blot.
<b>Reactivity</b>	Human
<b>Quality Control Testing</b>	Immunoprecipitation-Western Blot (IP-WB) Immunoprecipitation of GIMAP5 transfected lysate using mouse monoclonal anti-GIMAP5 and Protein A Magnetic Bead ( <a href="#">U0007</a> ), and immunoblotted with rabbit polyclonal anti-GIMAP5.
<b>Supplied Product</b>	Antibody pair set content: 1. Antibody pair for IP: mouse monoclonal anti-GIMAP5 (300 ul) 2. Antibody pair for WB: rabbit polyclonal anti-GIMAP5 (50 ul)
<b>Storage Instruction</b>	Store reagents of the antibody pair set at -20°C or lower. Please aliquot to avoid repeated freeze thaw cycle. Reagents should be returned to -20°C storage immediately after use.

## Applications

- Immunoprecipitation-Western Blot

[Protocol Download](#)

## Gene Info — GIMAP5

Entrez GeneID	<a href="#">55340</a>
Gene Name	GIMAP5
Gene Alias	FLJ11296, HIMAP3, IAN4, IAN4L1, IAN5, IMAP3, hIAN5
Gene Description	GTPase, IMAP family member 5
Omim ID	<a href="#">608086</a>
Gene Ontology	<a href="#">Hyperlink</a>
Gene Summary	This gene encodes a protein belonging to the GTP-binding superfamily and to the immuno-associated nucleotide (IAN) subfamily of nucleotide-binding proteins. In humans, the IAN subfamily genes are located in a cluster at 7q36.1. [provided by RefSeq]
Other Designations	immune associated nucleotide 4 like 1 immunity associated protein 3

## Disease

- [Arthritis](#)
- [Diabetes Mellitus](#)
- [Genetic Predisposition to Disease](#)
- [Lupus Erythematosus](#)