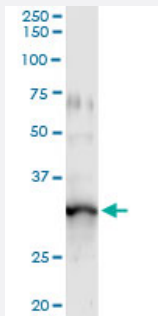


GIMAP5 (Human) IP-WB Antibody Pair

Catalog # H00055340-PW2

Size 1 Set

Applications



Immunoprecipitation of GIMAP5 transfected lysate using mouse monoclonal anti-GIMAP5 and Protein A Magnetic Bead ([U0007](#)), and immunoblotted with rabbit polyclonal anti-GIMAP5.

Specification

Product Description	This IP-WB antibody pair set comes with one antibody for immunoprecipitation and another to detect the precipitated protein in western blot.
Reactivity	Human
Quality Control Testing	Immunoprecipitation-Western Blot (IP-WB) Immunoprecipitation of GIMAP5 transfected lysate using mouse monoclonal anti-GIMAP5 and Protein A Magnetic Bead (U0007), and immunoblotted with rabbit polyclonal anti-GIMAP5.
Supplied Product	Antibody pair set content: 1. Antibody pair for IP: mouse monoclonal anti-GIMAP5 (300 ug) 2. Antibody pair for WB: rabbit polyclonal anti-GIMAP5 (50 ul)
Storage Instruction	Store reagents of the antibody pair set at -20°C or lower. Please aliquot to avoid repeated freeze thaw cycle. Reagents should be returned to -20°C storage immediately after use.

Applications

- Immunoprecipitation-Western Blot

[Protocol Download](#)

Gene Info — GIMAP5

Entrez GeneID	55340
Gene Name	GIMAP5
Gene Alias	FLJ11296, HIMAP3, IAN4, IAN4L1, IAN5, IMAP3, hIAN5
Gene Description	GTPase, IMAP family member 5
Omim ID	608086
Gene Ontology	Hyperlink
Gene Summary	This gene encodes a protein belonging to the GTP-binding superfamily and to the immuno-associated nucleotide (IAN) subfamily of nucleotide-binding proteins. In humans, the IAN subfamily genes are located in a cluster at 7q36.1. [provided by RefSeq]
Other Designations	immune associated nucleotide 4 like 1 immunity associated protein 3

Disease

- [Arthritis](#)
- [Diabetes Mellitus](#)
- [Genetic Predisposition to Disease](#)
- [Lupus Erythematosus](#)