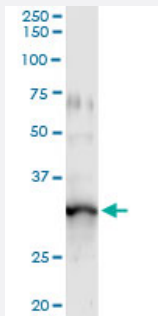


GIMAP5 monoclonal antibody (M10), clone 1E10

Catalog # H00055340-M10

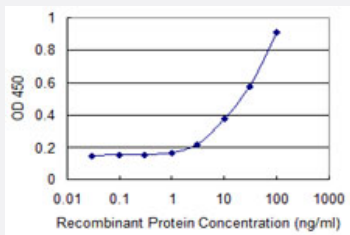
Size 100 ug

Applications



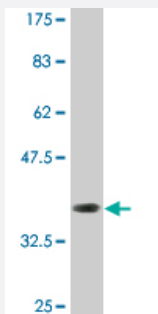
Immunoprecipitation

Immunoprecipitation of GIMAP5 transfected lysate using anti-GIMAP5 monoclonal antibody and Protein A Magnetic Bead, and immunoblotted with GIMAP5 MaxPab rabbit polyclonal antibody.



Sandwich ELISA (Recombinant protein)

Detection limit for recombinant GST tagged GIMAP5 is 1 ng/ml as a capture antibody.



Western Blot detection against Immunogen (36.63 KDa) .

Specification

Product Description

Mouse monoclonal antibody raised against a partial recombinant GIMAP5.

Immunogen	GIMAP5 (NP_060854.2, 186 a.a. ~ 284 a.a) partial recombinant protein with GST tag. MW of the GST tag alone is 26 KDa.
Sequence	AFNNWGSVEEQRQQQAELLAVIERLGREREGSFHSNDLFLDAQLLQRTGAGACQEDYRQYQAK VEWQVEKHKQELRENESNWAYKALLRVKHLMLLHYE
Host	Mouse
Reactivity	Human
Isotype	IgG2a Kappa
Quality Control Testing	Antibody Reactive Against Recombinant Protein. Western Blot detection against Immunogen (36.63 KDa) .
Storage Buffer	In 1x PBS, pH 7.4
Storage Instruction	Store at -20°C or lower. Aliquot to avoid repeated freezing and thawing.

Applications

- Western Blot (Recombinant protein)

[Protocol Download](#)

- Immunoprecipitation

Immunoprecipitation of GIMAP5 transfected lysate using anti-GIMAP5 monoclonal antibody and Protein A Magnetic Bead, and immunoblotted with GIMAP5 MaxPab rabbit polyclonal antibody.

[Protocol Download](#)

- Sandwich ELISA (Recombinant protein)

Detection limit for recombinant GST tagged GIMAP5 is 1 ng/ml as a capture antibody.

[Protocol Download](#)

- ELISA

Gene Info — GIMAP5

Entrez GeneID	55340
GeneBank Accession#	NM_018384

Protein Accession#	NP_060854.2
Gene Name	GIMAP5
Gene Alias	FLJ11296, HIMAP3, IAN4, IAN4L1, IAN5, IMAP3, hIAN5
Gene Description	GTPase, IMAP family member 5
Omim ID	608086
Gene Ontology	Hyperlink
Gene Summary	This gene encodes a protein belonging to the GTP-binding superfamily and to the immuno-associated nucleotide (IAN) subfamily of nucleotide-binding proteins. In humans, the IAN subfamily genes are located in a cluster at 7q36.1. [provided by RefSeq]
Other Designations	immune associated nucleotide 4 like 1 immunity associated protein 3

Disease

- [Arthritis](#)
- [Diabetes Mellitus](#)
- [Genetic Predisposition to Disease](#)
- [Lupus Erythematosus](#)