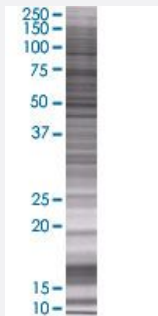


ADI1 293T Cell Transient Overexpression Lysate(Denatured)

Catalog # H00055256-T01

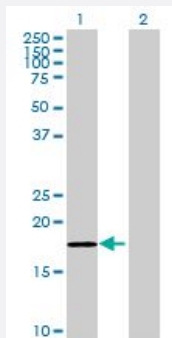
Size 100 uL

Applications



SDS-PAGE Gel

ADI1 transfected lysate.



Western Blot

Lane 1: ADI1 transfected lysate (19.8 KDa)

Lane 2: Non-transfected lysate.

Specification

Transfected Cell Line	293T
Plasmid	pCMV-ADI1 full-length
Host	Human
Theoretical MW (kDa)	19.8
Interspecies Antigen Sequence	Mouse (85); Rat (84)

Quality Control Testing

Transient overexpression cell lysate was tested with Anti-ADI1 antibody ([H00055256-B01](#)) by Western Blots.
 SDS-PAGE Gel
 ADI1 transfected lysate.
 Western Blot
 Lane 1: ADI1 transfected lysate (19.8 KDa)
 Lane 2: Non-transfected lysate.

Storage Buffer

1X Sample Buffer (50 mM Tris-HCl, 2% SDS, 10% glycerol, 300 mM 2-mercaptoethanol, 0.01% Bromophenol blue)

Storage Instruction

Store at -80°C. Aliquot to avoid repeated freezing and thawing.

Applications

- Western Blot

Gene Info — ADI1

Entrez GeneID

[55256](#)

GeneBank Accession#

[NM_018269.1](#)

Protein Accession#

[NP_060739.1](#)

Gene Name

ADI1

Gene Alias

APL1, ARD, FLJ10913, HMFT1638, MTCBP-1, MTCBP1, SIP-L, SIPL

Gene Description

acireductone dioxygenase 1

Gene Ontology

[Hyperlink](#)

Gene Summary

This gene encodes an enzyme that belongs to the aci-reductone dioxygenase family of metal-binding enzymes, which are involved in methionine salvage. This enzyme may regulate mRNA processing in the nucleus, and may carry out different functions depending on its localization. A pseudogene that is located on chromosome 20 has been defined for this gene. [provided by RefSeq]

Other Designations

1,2-dihydroxy-3-keto-5-methylthiopentene dioxygenase|MT1-MMP cytoplasmic tail-binding protein-1|membrane-type 1 matrix metalloproteinase cytoplasmic tail binding protein-1|submergence induced protein 2

Pathway

- [Cysteine and methionine metabolism](#)
- [Metabolic pathways](#)

Disease

- [Tobacco Use Disorder](#)