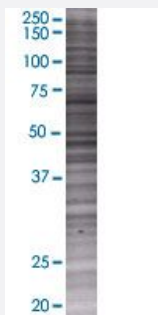


# UBE1L2 293T Cell Transient Overexpression Lysate(Denatured)

Catalog # H00055236-T01

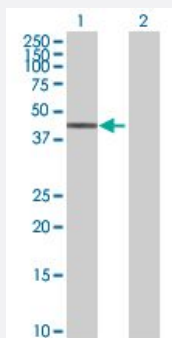
Size 100 uL

## Applications



### SDS-PAGE Gel

UBA6 transfected lysate.



### Western Blot

Lane 1: UBA6 transfected lysate ( 42.9 KDa)

Lane 2: Non-transfected lysate.

## Specification

Transfected Cell Line	293T
Plasmid	pCMV-UBE1L2 full-length
Host	Human
Theoretical MW (kDa)	42.9
Interspecies Antigen Sequence	Mouse (84); Rat (84)

## Quality Control Testing

Transient overexpression cell lysate was tested with Anti-UBE1L2 antibody ([H00055236-B01](#)) by Western Blots.  
SDS-PAGE Gel  
UBA6 transfected lysate.  
Western Blot  
Lane 1: UBA6 transfected lysate ( 42.9 KDa)  
Lane 2: Non-transfected lysate.

## Storage Buffer

1X Sample Buffer (50 mM Tris-HCl, 2% SDS, 10% glycerol, 300 mM 2-mercaptoethanol, 0.01% Bromophenol blue)

## Storage Instruction

Store at -80°C. Aliquot to avoid repeated freezing and thawing.

## Applications

- Western Blot

## Gene Info — UBA6

## Entrez GeneID

[55236](#)

## GeneBank Accession#

[BC031637.1](#)

## Protein Accession#

[AAH31637.1](#)

## Gene Name

UBA6

## Gene Alias

FLJ10808, FLJ23367, MOP-4, UBE1L2

## Gene Description

ubiquitin-like modifier activating enzyme 6

## Omim ID

[611361](#)

## Gene Ontology

[Hyperlink](#)

## Gene Summary

Modification of proteins with ubiquitin (UBB; MIM 191339) or ubiquitin-like proteins controls many signaling networks and requires a ubiquitin-activating enzyme (E1), a ubiquitin conjugating enzyme (E2), and a ubiquitin protein ligase (E3). UBE1L2 is an E1 enzyme that initiates the activation and conjugation of ubiquitin-like proteins (Jin et al., 2007 [PubMed 17597759]).[supplied by OMIM]

## Other Designations

UBA6, ubiquitin-activating enzyme E1|ubiquitin-activating enzyme E1-like 2

## Pathway

- [Ubiquitin mediated proteolysis](#)