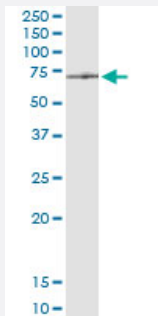


ATAD3A (Human) IP-WB Antibody Pair

Catalog # H00055210-PW1

Size 1 Set

Applications



Immunoprecipitation of ATAD3A transfected lysate using rabbit polyclonal anti-ATAD3A and Protein A Magnetic Bead ([U0007](#)), and immunoblotted with mouse purified polyclonal anti-ATAD3A.

Specification

Product Description	This IP-WB antibody pair set comes with one antibody for immunoprecipitation and another to detect the precipitated protein in western blot.
Reactivity	Human
Interspecies Antigen Sequence	Mouse (93); Rat (93)
Quality Control Testing	Immunoprecipitation-Western Blot (IP-WB) Immunoprecipitation of ATAD3A transfected lysate using rabbit polyclonal anti-ATAD3A and Protein A Magnetic Bead (U0007), and immunoblotted with mouse purified polyclonal anti-ATAD3A.
Supplied Product	Antibody pair set content: 1. Antibody pair for IP: rabbit polyclonal anti-ATAD3A (300 ul) 2. Antibody pair for WB: mouse purified polyclonal anti-ATAD3A (50 ug)
Storage Instruction	Store reagents of the antibody pair set at -20°C or lower. Please aliquot to avoid repeated freeze thaw cycle. Reagents should be returned to -20°C storage immediately after use.

Applications

- Immunoprecipitation-Western Blot

[Protocol Download](#)

Gene Info — ATAD3A

Entrez GeneID	55210
---------------	-----------------------

Gene Name	ATAD3A
-----------	--------

Gene Alias	FLJ10709
------------	----------

Gene Description	ATPase family, AAA domain containing 3A
------------------	---

Gene Ontology	Hyperlink
---------------	---------------------------

Gene Summary	ATAD3A and ATAD3B (MIM 612317) are mitochondrial membrane proteins that contribute to the stabilization of large mitochondrial DNA (mtDNA)-protein complexes called nucleoids (He et al., 2007 [PubMed 17210950]).[supplied by OMIM]
--------------	--

Other Designations	OTTHUMP00000000596
--------------------	--------------------