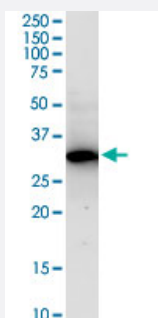


# RPRD1A (Human) IP-WB Antibody Pair

Catalog # H00055197-PW2

Size 1 Set

## Applications



Immunoprecipitation of RPRD1A transfected lysate using rabbit polyclonal anti-RPRD1A and Protein A Magnetic Bead ([U0007](#)), and immunoblotted with mouse purified polyclonal anti-RPRD1A.

## Specification

<b>Product Description</b>	This IP-WB antibody pair set comes with one antibody for immunoprecipitation and another to detect the precipitated protein in western blot.
<b>Reactivity</b>	Human
<b>Interspecies Antigen Sequence</b>	Mouse (98); Rat (98)
<b>Quality Control Testing</b>	Immunoprecipitation-Western Blot (IP-WB) Immunoprecipitation of RPRD1A transfected lysate using rabbit polyclonal anti-RPRD1A and Protein A Magnetic Bead ( <a href="#">U0007</a> ), and immunoblotted with mouse purified polyclonal anti-RPRD1A.
<b>Supplied Product</b>	Antibody pair set content: 1. Antibody pair for IP: rabbit polyclonal anti-RPRD1A (300 ul) 2. Antibody pair for WB: mouse purified polyclonal anti-RPRD1A (50 ug)
<b>Storage Instruction</b>	Store reagents of the antibody pair set at -20°C or lower. Please aliquot to avoid repeated freeze thaw cycle. Reagents should be returned to -20°C storage immediately after use.

## Applications

- Immunoprecipitation-Western Blot

[Protocol Download](#)

## Gene Info — RPRD1A

Entrez GeneID	<a href="#">55197</a>
Gene Name	RPRD1A
Gene Alias	FLJ10656, HsT3101, MGC19513, P15RS
Gene Description	regulation of nuclear pre-mRNA domain containing 1A
Omim ID	<a href="#">610347</a>
Gene Ontology	<a href="#">Hyperlink</a>
Gene Summary	P15RS is upregulated in cells overexpressing cyclin-dependent kinase inhibitor p15(INK4b) (CD KN2B; MIM 600431) and may have a role in cell cycle regulation (Liu et al., 2002 [PubMed 12470 661]).[supplied by OMIM]
Other Designations	Cyclin-dependent kinase inhibitor 2B-related protein (p15INK4B-related protein) cyclin-dependent kinase 2B-inhibitor-related protein