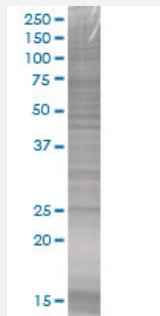


MRPS10 293T Cell Transient Overexpression Lysate(Denatured)

Catalog # H00055173-T01

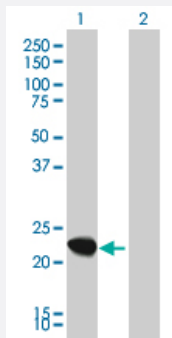
Size 100 uL

Applications



SDS-PAGE Gel

MRPS10 transfected lysate



Western Blot

Lane 1: MRPS10 transfected lysate (22.22 KDa).

Lane 2: Non-transfected lysate.

Specification

Transfected Cell Line	293T
Plasmid	pCMV-MRPS10 full-length
Host	Human
Theoretical MW (kDa)	22.22
Interspecies Antigen Sequence	Mouse (81); Rat (87)

Quality Control Testing

Transient overexpression cell lysate was tested with Anti-MRPS10 antibody ([H00055173-B01](#)) by Western Blots.
SDS-PAGE Gel
MRPS10 transfected lysate
Western Blot
Lane 1: MRPS10 transfected lysate (22.22 KDa).
Lane 2: Non-transfected lysate.

Storage Buffer

1X Sample Buffer (50 mM Tris-HCl, 2% SDS, 10% glycerol, 300 mM 2-mercaptoethanol, 0.01% Bromophenol blue)

Storage Instruction

Store at -80°C. Aliquot to avoid repeated freezing and thawing.

Applications

- Western Blot

Gene Info — MRPS10

Entrez GeneID

[55173](#)

GeneBank Accession#

[BC012560](#)

Protein Accession#

[AAH12560](#)

Gene Name

MRPS10

Gene Alias

FLJ10567, MRP-S10, PNAS-122

Gene Description

mitochondrial ribosomal protein S10

Gene Ontology

[Hyperlink](#)

Gene Summary

Mammalian mitochondrial ribosomal proteins are encoded by nuclear genes and help in protein synthesis within the mitochondrion. Mitochondrial ribosomes (mitoribosomes) consist of a small 28S subunit and a large 39S subunit. They have an estimated 75% protein to rRNA composition compared to prokaryotic ribosomes, where this ratio is reversed. Another difference between mammalian mitoribosomes and prokaryotic ribosomes is that the latter contain a 5S rRNA. Among different species, the proteins comprising the mitoribosome differ greatly in sequence, and sometimes in biochemical properties, which prevents easy recognition by sequence homology. This gene encodes a 28S subunit protein that belongs to the ribosomal protein S10P family. Pseudogenes corresponding to this gene are found on chromosomes 1q, 3p, and 9p. [provided by RefSeq]

Other Designations

OTTHUMP00000016395|mitochondrial 28S ribosomal protein S10