

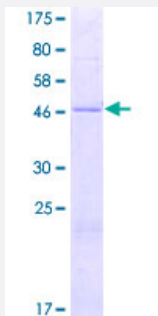
Full-Length

MRPS10 (Human) Recombinant Protein (P01)

Catalog # H00055173-P01

Size 25 ug, 10 ug

Applications



Specification

Product Description

Human MRPS10 full-length ORF (NP_060611.2, 1 a.a. - 201 a.a.) recombinant protein with GST-tag at N-terminal.

Sequence

MAARTAFGAVCRRLWQGLGNFSVNTSKGNTAKNGGLLLSTNMKWVQFSNLHVDVPKDLTKPVV
TISDEPDILYKRLSVLVKGHDKAVLDSYEYFAVLA AKELGISIKVHEPPRKIERFTLLQSVHIYKKHRV
QYEMRTL YRCLELEHLTGSTADVLEYIQRNLPEGVAMEVTKTQLEQLPEHIKEPIWETLSEEKEES
KS

Host

Wheat Germ (in vitro)

Theoretical MW (kDa)

49.4

Interspecies Antigen Sequence

Mouse (81); Rat (87)

Preparation Method

[in vitro wheat germ expression system](#)

Purification

Glutathione Sepharose 4 Fast Flow

Quality Control Testing

12.5% SDS-PAGE Stained with Coomassie Blue.

Storage Buffer

50 mM Tris-HCl, 10 mM reduced Glutathione, pH=8.0 in the elution buffer.

Storage Instruction

Store at -80°C. Aliquot to avoid repeated freezing and thawing.

Note

Best use within three months from the date of receipt of this protein.

Applications

- Enzyme-linked Immunoabsorbent Assay
- Western Blot (Recombinant protein)
- Antibody Production
- Protein Array

Gene Info — MRPS10

Entrez GeneID [55173](#)

GeneBank Accession# [NM_018141.2](#)

Protein Accession# [NP_060611.2](#)

Gene Name MRPS10

Gene Alias FLJ10567, MRP-S10, PNAS-122

Gene Description mitochondrial ribosomal protein S10

Gene Ontology [Hyperlink](#)

Gene Summary Mammalian mitochondrial ribosomal proteins are encoded by nuclear genes and help in protein synthesis within the mitochondrion. Mitochondrial ribosomes (mitoribosomes) consist of a small 28S subunit and a large 39S subunit. They have an estimated 75% protein to rRNA composition compared to prokaryotic ribosomes, where this ratio is reversed. Another difference between mammalian mitoribosomes and prokaryotic ribosomes is that the latter contain a 5S rRNA. Among different species, the proteins comprising the mitoribosome differ greatly in sequence, and sometimes in biochemical properties, which prevents easy recognition by sequence homology. This gene encodes a 28S subunit protein that belongs to the ribosomal protein S10P family. Pseudogenes corresponding to this gene are found on chromosomes 1q, 3p, and 9p. [provided by RefSeq]

Other Designations OTTHUMP00000016395|mitochondrial 28S ribosomal protein S10