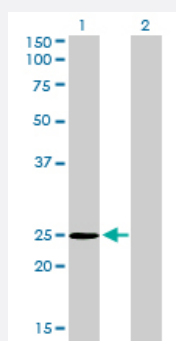


THAP1 monoclonal antibody (M01), clone 2C1-2F2

Catalog # H00055145-M01

Size 100 ug

Applications

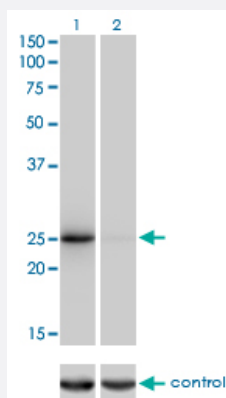


Western Blot (Transfected lysate)

Western Blot analysis of THAP1 expression in transfected 293T cell line by THAP1 monoclonal antibody (M01), clone 2C1-2F2.

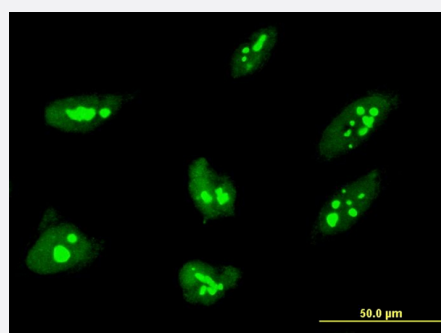
Lane 1: THAP1 transfected lysate(24.9 KDa).

Lane 2: Non-transfected lysate.



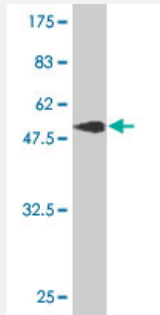
RNAi Knockdown (Antibody validated)

Western blot analysis of THAP1 over-expressed 293 cell line, cotransfected with THAP1 Validated Chimera RNAi (Cat # H00055145-R01V) (Lane 2) or non-transfected control (Lane 1). Blot probed with THAP1 monoclonal antibody (M01), clone 2C1-2F2 (Cat # H00055145-M01). GAPDH (36.1 kDa) used as specificity and loading control.



Immunofluorescence

Immunofluorescence of monoclonal antibody to THAP1 on HeLa cell . [antibody concentration 10 ug/ml]



Western Blot detection against Immunogen (49.17 KDa) .

Specification

Product Description	Mouse monoclonal antibody raised against a full length recombinant THAP1.
Immunogen	THAP1 (AAH21721, 1 a.a. ~ 213 a.a) full-length recombinant protein with GST tag. MW of the GST tag alone is 26 KDa.
Sequence	MVQSCSAYGCKNRYDKDKPVSFHKFPLTRPSLCKEWEAAVRRKNFKPTKYSSICSEHFTPDCFK RECNNKLLKENAVPTIFLCTEPHDKKEDLLEPQEQLPPPPLPPPVSQVDAAIGLLMPPLQTPVNL SVFCDHNYTVEDTMHQRKRIHQLEQQVEKLRKKLKTAAQRCRRQERQLEKLKEVVHFQKEKDD VSERGYVILPNDYFEMEVP
Host	Mouse
Reactivity	Human
Interspecies Antigen Sequence	Mouse (92); Rat (92)
Isotype	IgG2b Kappa
Quality Control Testing	Antibody Reactive Against Recombinant Protein. Western Blot detection against Immunogen (49.17 KDa) .
Storage Buffer	In 1x PBS, pH 7.4
Storage Instruction	Store at -20°C or lower. Aliquot to avoid repeated freezing and thawing.

Applications

- Western Blot (Transfected lysate)

Western Blot analysis of THAP1 expression in transfected 293T cell line by THAP1 monoclonal antibody (M01), clone 2C1-2F2.

Lane 1: THAP1 transfected lysate(24.9 KDa).

Lane 2: Non-transfected lysate.

[Protocol Download](#)

- Western Blot (Recombinant protein)

[Protocol Download](#)

- ELISA

- RNAi Knockdown (Antibody validated)

Western blot analysis of THAP1 over-expressed 293 cell line, cotransfected with THAP1 Validated Chimera RNAi (Cat # H00055145-R01V) (Lane 2) or non-transfected control (Lane 1). Blot probed with THAP1 monoclonal antibody (M01), clone 2C1-2F2 (Cat # H00055145-M01). GAPDH (36.1 kDa) used as specificity and loading control.

[Protocol Download](#)

- Immunofluorescence

Immunofluorescence of monoclonal antibody to THAP1 on HeLa cell . [antibody concentration 10 ug/ml]

Gene Info — THAP1

Entrez GeneID [55145](#)

GeneBank Accession# [BC021721](#)

Protein Accession# [AAH21721](#)

Gene Name THAP1

Gene Alias FLJ10477, MGC33014

Gene Description THAP domain containing, apoptosis associated protein 1

Omim ID [609520](#)

Gene Ontology [Hyperlink](#)

Gene Summary

The protein encoded by this gene contains a THAP domain, a conserved DNA-binding domain. This protein colocalizes with the apoptosis response protein PAWR/PAR-4 in promyelocytic leukemia (PML) nuclear bodies, and functions as a proapoptotic factor that links PAWR to PML nuclear bodies. Alternatively spliced transcript variants encoding distinct isoforms have been observed. [provided by RefSeq]

Other Designations

4833431A01Rik|THAP domain protein 1|nuclear proapoptotic factor

Disease

- [Dystonia](#)
- [Dystonic Disorders](#)
- [Genetic Predisposition to Disease](#)