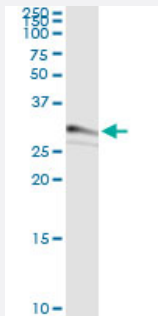


CDCA8 (Human) IP-WB Antibody Pair

Catalog # H00055143-PW1

Size 1 Set

Applications



Immunoprecipitation of CDCA8 transfected lysate using rabbit polyclonal anti-CDCA8 and Protein A Magnetic Bead ([U0007](#)), and immunoblotted with mouse purified polyclonal anti-CDCA8.

Specification

Product Description	This IP-WB antibody pair set comes with one antibody for immunoprecipitation and another to detect the precipitated protein in western blot.
Reactivity	Human
Interspecies Antigen Sequence	Mouse (76); Rat (77)
Quality Control Testing	Immunoprecipitation-Western Blot (IP-WB) Immunoprecipitation of CDCA8 transfected lysate using rabbit polyclonal anti-CDCA8 and Protein A Magnetic Bead (U0007), and immunoblotted with mouse purified polyclonal anti-CDCA8.
Supplied Product	Antibody pair set content: 1. Antibody pair for IP: rabbit polyclonal anti-CDCA8 (300 ul) 2. Antibody pair for WB: mouse purified polyclonal anti-CDCA8 (50 ug)
Storage Instruction	Store reagents of the antibody pair set at -20°C or lower. Please aliquot to avoid repeated freeze thaw cycle. Reagents should be returned to -20°C storage immediately after use.

Applications

- Immunoprecipitation-Western Blot

[Protocol Download](#)

Gene Info — CDCA8

Entrez GeneID	55143
Gene Name	CDCA8
Gene Alias	BOR, BOREALIN, FLJ10468, FLJ12042
Gene Description	cell division cycle associated 8
Omim ID	609977
Gene Ontology	Hyperlink
Gene Summary	CDCA8 is a component of a chromosomal passenger complex required for stability of the bipolar mitotic spindle (Gassmann et al., 2004 [PubMed 15249581]).[supplied by OMIM]
Other Designations	Dasra B OTTHUMP00000004514 OTTHUMP00000004515