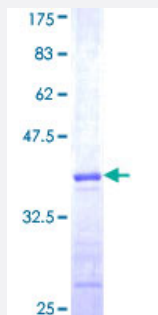


TRIM68 (Human) Recombinant Protein (Q01)

Catalog # H00055128-Q01

Size 25 ug, 10 ug

Applications



Specification

Product Description	Human TRIM68 partial ORF (NP_060543, 181 a.a. - 280 a.a.) recombinant protein with GST-tag at N-terminal.
Sequence	KQSIVWEFEKYQRLLEKKQPPHRQLGAEVAAALASLQREAAETMQKLELNHSELIQQSQVLWRMI AELKERSQRPVRWMLQDIQEVNRSKSWSLQQPEP
Host	Wheat Germ (in vitro)
Theoretical MW (kDa)	36.74
Interspecies Antigen Sequence	Mouse (77)
Preparation Method	in vitro wheat germ expression system
Purification	Glutathione Sepharose 4 Fast Flow
Quality Control Testing	12.5% SDS-PAGE Stained with Coomassie Blue.
Storage Buffer	50 mM Tris-HCl, 10 mM reduced Glutathione, pH=8.0 in the elution buffer.
Storage Instruction	Store at -80°C. Aliquot to avoid repeated freezing and thawing.
Note	Best use within three months from the date of receipt of this protein.

Applications

- Enzyme-linked Immunoabsorbent Assay
- Western Blot (Recombinant protein)
- Antibody Production
- Protein Array

Gene Info — TRIM68

Entrez GeneID [55128](#)

GeneBank Accession# [NM_018073](#)

Protein Accession# [NP_060543](#)

Gene Name TRIM68

Gene Alias FLJ10369, MGC126176, RNF137, SS-56

Gene Description tripartite motif-containing 68

Gene Ontology [Hyperlink](#)

Gene Summary The protein encoded by this gene contains a RING finger domain, a motif present in a variety of functionally distinct proteins and known to be involved in protein-protein and protein-DNA interactions. This gene is expressed in many cancer cell lines. Its expression in normal tissues, however, was found to be restricted to prostate. This gene was also found to be differentially expressed in androgen-dependent versus androgen-independent prostate cancer cells. [provided by RefSeq]

Other Designations Ro/SSA1 related protein|SSA protein SS-56|ring finger protein 137

Disease

- [Diabetes Mellitus](#)
- [Genetic Predisposition to Disease](#)