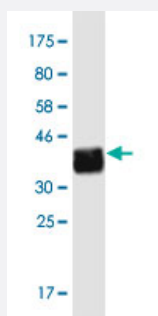


WIP11 monoclonal antibody (M01A), clone 2D1

Catalog # H00055062-M01A

Size 200 uL

Applications



Western Blot detection against Immunogen (36.52 KDa) .

Specification

Product Description	Mouse monoclonal antibody raised against a partial recombinant WIP11 .
Immunogen	WIP11 (NP_060453.2, 348 a.a. ~ 445 a.a) partial recombinant protein with GST tag. MW of the GST tag alone is 26 KDa.
Sequence	GGECVLIKTHSLLGSGTTEENKENDLRPSLPQSYAATVARPSASSASTVPGYSEDGGALRGEVIP EHEFATGPVCLDDENEFPPILCRGNQKGKTKQ
Host	Mouse
Reactivity	Human
Interspecies Antigen Sequence	Mouse (94); Rat (94)
Isotype	IgG2a Kappa
Quality Control Testing	Antibody Reactive Against Recombinant Protein. Western Blot detection against Immunogen (36.52 KDa) .
Storage Buffer	In ascites fluid
Storage Instruction	Store at -20°C or lower. Aliquot to avoid repeated freezing and thawing.

Applications

- Western Blot (Recombinant protein)

[Protocol Download](#)

- ELISA

Gene Info — WIP1

Entrez GeneID	55062
GeneBank Accession#	NM_017983
Protein Accession#	NP_060453.2
Gene Name	WIP1
Gene Alias	ATG18, FLJ10055, WIP49
Gene Description	WD repeat domain, phosphoinositide interacting 1
Omim ID	609224
Gene Ontology	Hyperlink
Gene Summary	WD40 repeat proteins are key components of many essential biologic functions. They regulate the assembly of multiprotein complexes by presenting a beta-propeller platform for simultaneous and reversible protein-protein interactions. Members of the WIP1 subfamily of WD40 repeat proteins, such as WIP1, have a 7-bladed propeller structure and contain a conserved motif for interaction with phospholipids (Proikas-Cezanne et al., 2004 [PubMed 15602573]).[supplied by OMIM]
Other Designations	WD40 repeat protein Interacting with phospholipids of 49kDa WIP1-1 alpha