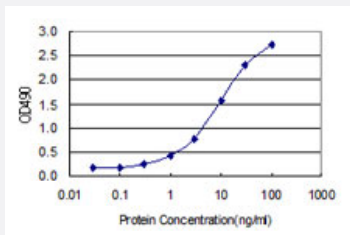


PIH1D1 (Human) Matched Antibody Pair

Catalog # H00055011-AP22

Size 1 Set

Applications



Sandwich ELISA detection sensitivity ranging from 0.1 ng/ml to 100 ng/ml.

Specification

Product Description	This antibody pair set comes with a matched antibody pair to detect and quantify the protein level of human PIH1D1.
Reactivity	Human
Interspecies Antigen Sequence	Mouse (80); Rat (81)
Quality Control Testing	Standard curve using recombinant protein (H00055011-P01) as an analyte. Sandwich ELISA detection sensitivity ranging from 0.1 ng/ml to 100 ng/ml.
Supplied Product	Antibody pair set content: 1. Capture antibody: rabbit MaxPab® affinity purified polyclonal anti-PIH1D1 (100 ug) 2. Detection antibody: mouse purified polyclonal anti-PIH1D1 (20 ug) *Reagents are sufficient for at least 1-2 x 96 well plates using recommended protocols.
Storage Instruction	Store reagents of the antibody pair set at -20°C or lower. Please aliquot to avoid repeated freeze thaw cycle. Reagents should be returned to -20°C storage immediately after use.

Applications

- ELISA Pair (Recombinant protein)

[Protocol Download](#)

Gene Info — PIH1D1

Entrez GeneID	55011
Gene Name	PIH1D1
Gene Alias	FLJ20643, NOP17
Gene Description	PIH1 domain containing 1
Omim ID	611480
Gene Ontology	Hyperlink
Other Designations	NOP17