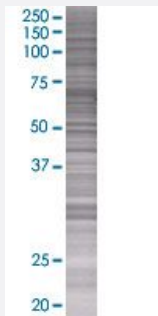


# SSH3 293T Cell Transient Overexpression Lysate(Denatured)

Catalog # H00054961-T01

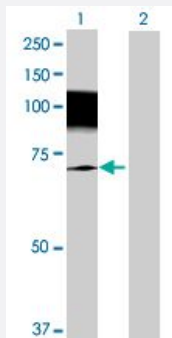
Size 100 uL

## Applications



### SDS-PAGE Gel

SSH3 transfected lysate.



### Western Blot

Lane 1: SSH3 transfected lysate ( 72.6 KDa)

Lane 2: Non-transfected lysate.

## Specification

Transfected Cell Line	293T
Plasmid	pCMV-SSH3 full-length
Host	Human
Theoretical MW (kDa)	72.6
Interspecies Antigen Sequence	Mouse (80); Rat (81)

## Quality Control Testing

Transient overexpression cell lysate was tested with Anti-SSH3 antibody ([H00054961-B01](#)) by Western Blots.  
 SDS-PAGE Gel  
 SSH3 transfected lysate.  
 Western Blot  
 Lane 1: SSH3 transfected lysate ( 72.6 KDa)  
 Lane 2: Non-transfected lysate.

## Storage Buffer

1X Sample Buffer (50 mM Tris-HCl, 2% SDS, 10% glycerol, 300 mM 2-mercaptoethanol, 0.01% Bromophenol blue)

## Storage Instruction

Store at -80°C. Aliquot to avoid repeated freezing and thawing.

## Applications

- Western Blot

## Gene Info — SSH3

### Entrez GeneID

[54961](#)

### GeneBank Accession#

[BC007709.1](#)

### Protein Accession#

[AAH07709.1](#)

### Gene Name

SSH3

### Gene Alias

FLJ10928, FLJ20515, SSH-3

### Gene Description

slingshot homolog 3 (Drosophila)

### Omim ID

[606780](#)

### Gene Ontology

[Hyperlink](#)

### Gene Summary

The ADF (actin-depolymerizing factor)/cofilin family (see MIM 601442) is composed of stimulus-responsive mediators of actin dynamics. ADF/cofilin proteins are inactivated by kinases such as LIM domain kinase-1 (LIMK1; MIM 601329). The SSH family appears to play a role in actin dynamics by reactivating ADF/cofilin proteins in vivo (Niwa et al., 2002 [PubMed 11832213]).[supplied by OMIM]

### Other Designations

slingshot 3|slingshot homolog 3

## Pathway

- [Regulation of actin cytoskeleton](#)