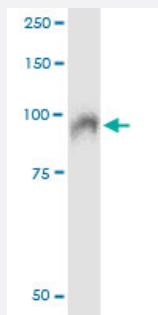


SSH3 (Human) IP-WB Antibody Pair

Catalog # H00054961-PW1

Size 1 Set

Applications



Immunoprecipitation of SSH3 transfected lysate using mouse monoclonal anti-SSH3 and Protein A Magnetic Bead ([U0007](#)), and immunoblotted with mouse monoclonal anti-SSH3.

Specification

Product Description	This IP-WB antibody pair set comes with one antibody for immunoprecipitation and another to detect the precipitated protein in western blot.
Reactivity	Human
Interspecies Antigen Sequence	Mouse (80); Rat (81)
Quality Control Testing	Immunoprecipitation-Western Blot (IP-WB) Immunoprecipitation of SSH3 transfected lysate using mouse monoclonal anti-SSH3 and Protein A Magnetic Bead (U0007), and immunoblotted with mouse monoclonal anti-SSH3.
Supplied Product	Antibody pair set content: 1. Antibody pair for IP: mouse monoclonal anti-SSH3 (300 ug) 2. Antibody pair for WB: mouse monoclonal anti-SSH3 (50 ug)
Storage Instruction	Store reagents of the antibody pair set at -20°C or lower. Please aliquot to avoid repeated freeze thaw cycle. Reagents should be returned to -20°C storage immediately after use.

Applications

- Immunoprecipitation-Western Blot

[Protocol Download](#)

Gene Info — SSH3

Entrez GeneID [54961](#)

Gene Name SSH3

Gene Alias FLJ10928, FLJ20515, SSH-3

Gene Description slingshot homolog 3 (Drosophila)

Omim ID [606780](#)

Gene Ontology [Hyperlink](#)

Gene Summary The ADF (actin-depolymerizing factor)/cofilin family (see MIM 601442) is composed of stimulus-responsive mediators of actin dynamics. ADF/cofilin proteins are inactivated by kinases such as LIM domain kinase-1 (LIMK1; MIM 601329). The SSH family appears to play a role in actin dynamics by reactivating ADF/cofilin proteins in vivo (Niwa et al., 2002 [PubMed 11832213]).[supplied by OMIM]

Other Designations slingshot 3|slingshot homolog 3

Pathway

- [Regulation of actin cytoskeleton](#)