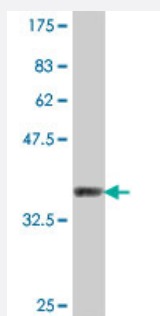


SSH3 polyclonal antibody (A01)

Catalog # H00054961-A01

Size 50 uL

Applications



Western Blot detection against Immunogen (37 KDa) .

Specification

Product Description	Mouse polyclonal antibody raised against a partial recombinant SSH3.
Immunogen	SSH3 (NP_060327, 293 a.a. ~ 391 a.a) partial recombinant protein with GST tag.
Sequence	SKEIRQALELRLGLPLQYRDFIDNQMLLLVAQRDRASRIFPHLYLGSEWNAANLEELQRNRVTHILNMAREIDNFYPERFTYHNVRLWDEESAQLLPH
Host	Mouse
Reactivity	Human
Interspecies Antigen Sequence	Mouse (80); Rat (81)
Quality Control Testing	Antibody Reactive Against Recombinant Protein. Western Blot detection against Immunogen (37 KDa) .
Storage Buffer	50 % glycerol
Storage Instruction	Store at -20°C or lower. Aliquot to avoid repeated freezing and thawing.

Applications

- Western Blot (Recombinant protein)

[Protocol Download](#)

- ELISA

Gene Info — SSH3

Entrez GeneID [54961](#)

GeneBank Accession# [NM_017857](#)

Protein Accession# [NP_060327](#)

Gene Name SSH3

Gene Alias FLJ10928, FLJ20515, SSH-3

Gene Description slingshot homolog 3 (Drosophila)

Omim ID [606780](#)

Gene Ontology [Hyperlink](#)

Gene Summary The ADF (actin-depolymerizing factor)/cofilin family (see MIM 601442) is composed of stimulus-responsive mediators of actin dynamics. ADF/cofilin proteins are inactivated by kinases such as LIM domain kinase-1 (LIMK1; MIM 601329). The SSH family appears to play a role in actin dynamics by reactivating ADF/cofilin proteins in vivo (Niwa et al., 2002 [PubMed 11832213]).[supplied by OMIM]

Other Designations slingshot 3|slingshot homolog 3

Pathway

- [Regulation of actin cytoskeleton](#)