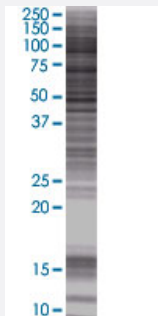


RHBDL2 293T Cell Transient Overexpression Lysate(Denatured)

Catalog # H00054933-T01

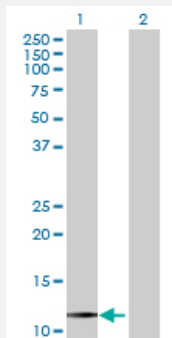
Size 100 uL

Applications



SDS-PAGE Gel

RHBDL2 transfected lysate.



Western Blot

Lane 1: RHBDL2 transfected lysate (13.42 KDa)

Lane 2: Non-transfected lysate.

Specification

Transfected Cell Line	293T
Plasmid	pCMV-RHBDL2 full-length
Host	Human
Theoretical MW (kDa)	13.42
Interspecies Antigen Sequence	Mouse (81); Rat (100)

Quality Control Testing

Transient overexpression cell lysate was tested with Anti-RHBDL2 antibody ([H00054933-B01](#)) by Western Blots.
SDS-PAGE Gel
RHBDL2 transfected lysate.
Western Blot
Lane 1: RHBDL2 transfected lysate (13.42 KDa)
Lane 2: Non-transfected lysate.

Storage Buffer

1X Sample Buffer (50 mM Tris-HCl, 2% SDS, 10% glycerol, 300 mM 2-mercaptoethanol, 0.01% Bromophenol blue)

Storage Instruction

Store at -80°C. Aliquot to avoid repeated freezing and thawing.

Applications

- Western Blot

Gene Info — RHBDL2

Entrez GeneID[54933](#)**GeneBank Accession#**[BC013103.1](#)**Protein Accession#**[AAH13103.1](#)**Gene Name**

RHBDL2

Gene Alias

MGC16997, RRP2

Gene Description

rhomboid, veinlet-like 2 (Drosophila)

Omim ID[608962](#)**Gene Ontology**[Hyperlink](#)**Gene Summary**

The protein encoded by this gene is a member of the rhomboid family of integral membrane proteins. This family contains proteins that are related to Drosophila rhomboid protein. Members of this family are found in both prokaryotes and eukaryotes and are thought to function as intramembrane serine proteases. The encoded protein is thought to release soluble growth factors by proteolytic cleavage of certain membrane-bound substrates, including ephrin B2 and ephrin B3. [provided by RefSeq]

Other Designations

OTTHUMP00000000546[rhomboid (veinlet, Drosophila)-like 2]rhomboid-related protein 2

Disease

- [Genetic Predisposition to Disease](#)
- [Neoplasm Invasiveness](#)
- [Prostatic Neoplasms](#)