

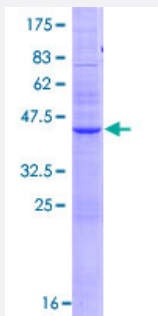
Full-Length

## RHBDL2 (Human) Recombinant Protein (P01)

Catalog # H00054933-P01

Size 25 ug, 10 ug

### Applications



### Specification

<b>Product Description</b>	Human RHBDL2 full-length ORF ( AAH13103.1, 1 a.a. - 121 a.a.) recombinant protein with GST-tag at N-terminal.
<b>Sequence</b>	MNLNMGREMKEELEEEEEKMREDGGGKDRAKSKKVHRVSKWMLPEKSRGTYLERANCFPPPV FIISISLAELAVFIYAVWKPQKQWITLDTGILESPFIYSPEKREEAWRFISYMLVHAG
<b>Host</b>	Wheat Germ (in vitro)
<b>Theoretical MW (kDa)</b>	40.6
<b>Interspecies Antigen Sequence</b>	Mouse (81); Rat (100)
<b>Preparation Method</b>	<a href="#">in vitro wheat germ expression system</a>
<b>Purification</b>	Glutathione Sepharose 4 Fast Flow
<b>Quality Control Testing</b>	12.5% SDS-PAGE Stained with Coomassie Blue.
<b>Storage Buffer</b>	50 mM Tris-HCl, 10 mM reduced Glutathione, pH=8.0 in the elution buffer.
<b>Storage Instruction</b>	Store at -80°C. Aliquot to avoid repeated freezing and thawing.
<b>Note</b>	Best use within three months from the date of receipt of this protein.

## Applications

- Enzyme-linked Immunoabsorbent Assay
- Western Blot (Recombinant protein)
- Antibody Production
- Protein Array

## Gene Info — RHBDL2

Entrez GeneID	<a href="#">54933</a>
GeneBank Accession#	<a href="#">BC013103.1</a>
Protein Accession#	<a href="#">AAH13103.1</a>
Gene Name	RHBDL2
Gene Alias	MGC16997, RRP2
Gene Description	rhomboid, veinlet-like 2 (Drosophila)
Omim ID	<a href="#">608962</a>
Gene Ontology	<a href="#">Hyperlink</a>
Gene Summary	The protein encoded by this gene is a member of the rhomboid family of integral membrane proteins. This family contains proteins that are related to Drosophila rhomboid protein. Members of this family are found in both prokaryotes and eukaryotes and are thought to function as intramembrane serine proteases. The encoded protein is thought to release soluble growth factors by proteolytic cleavage of certain membrane-bound substrates, including ephrin B2 and ephrin B3. [provided by RefSeq]
Other Designations	OTTHUMP00000000546 rhomboid (veinlet, Drosophila)-like 2 rhomboid-related protein 2

## Disease

- [Genetic Predisposition to Disease](#)
- [Neoplasm Invasiveness](#)

- [Prostatic Neoplasms](#)