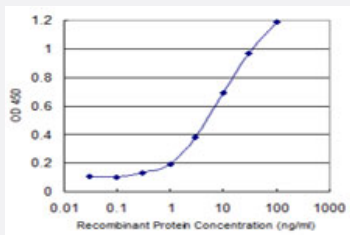


# RHBDL2 monoclonal antibody (M02), clone 2H1

Catalog # H00054933-M02

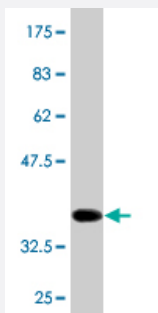
Size 100 ug

## Applications



### Sandwich ELISA (Recombinant protein)

Detection limit for recombinant GST tagged RHBDL2 is 0.1 ng/ml as a capture antibody.



Western Blot detection against Immunogen (33.66 KDa) .

## Specification

### Product Description

Mouse monoclonal antibody raised against a partial recombinant RHBDL2.

### Immunogen

RHBDL2 (NP\_060291.2, 1 a.a. ~ 72 a.a) partial recombinant protein with GST tag. MW of the GST tag alone is 26 KDa.

### Sequence

MAAVHDLEMESMNLNMGREMKEEEEEKMRDGGGKDRAKSKKVHRVSKWMLPEKSRGTY  
LERANCFPPP

### Host

Mouse

### Reactivity

Human

Interspecies Antigen Sequence	Mouse (81); Rat (100)
Isotype	IgG2b Kappa
Quality Control Testing	Antibody Reactive Against Recombinant Protein. Western Blot detection against Immunogen (33.66 KDa) .
Storage Buffer	In 1x PBS, pH 7.4
Storage Instruction	Store at -20°C or lower. Aliquot to avoid repeated freezing and thawing.

## Applications

- Western Blot (Recombinant protein)

[Protocol Download](#)

- Sandwich ELISA (Recombinant protein)

Detection limit for recombinant GST tagged RHBDL2 is 0.1 ng/ml as a capture antibody.

[Protocol Download](#)

- ELISA

## Gene Info — RHBDL2

Entrez GeneID	<a href="#">54933</a>
GeneBank Accession#	<a href="#">NM_017821</a>
Protein Accession#	<a href="#">NP_060291.2</a>
Gene Name	RHBDL2
Gene Alias	MGC16997, RRP2
Gene Description	rhomboid, veinlet-like 2 (Drosophila)
Omim ID	<a href="#">608962</a>
Gene Ontology	<a href="#">Hyperlink</a>

**Gene Summary**

The protein encoded by this gene is a member of the rhomboid family of integral membrane proteins. This family contains proteins that are related to Drosophila rhomboid protein. Members of this family are found in both prokaryotes and eukaryotes and are thought to function as intramembrane serine proteases. The encoded protein is thought to release soluble growth factors by proteolytic cleavage of certain membrane-bound substrates, including ephrin B2 and ephrin B3. [provided by RefSeq]

**Other Designations**

OTTHUMP00000000546|rhomboid (veinlet, Drosophila)-like 2|rhomboid-related protein 2

**Disease**

- [Genetic Predisposition to Disease](#)
- [Neoplasm Invasiveness](#)
- [Prostatic Neoplasms](#)