

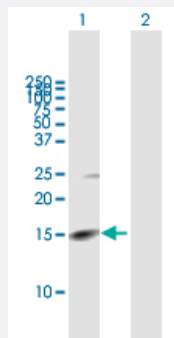
MaxPab®

# RHBDL2 purified MaxPab mouse polyclonal antibody (B01P)

Catalog # H00054933-B01P

Size 50 ug

## Applications



### Western Blot (Transfected lysate)

Western Blot analysis of RHBDL2 expression in transfected 293T cell line ([H00054933-T01](#)) by RHBDL2 MaxPab polyclonal antibody.

Lane 1: RHBDL2 transfected lysate(13.31 KDa).

Lane 2: Non-transfected lysate.

## Specification

|                               |  |
|-------------------------------|--|
| Product Description           | Mouse polyclonal antibody raised against a full-length human RHBDL2 protein.   |
| Immunogen                     | RHBDL2 (AAH13103.1, 1 a.a. ~ 121 a.a) full-length human protein.   |
| Sequence                      | MNLNMGREMKEELEEEEEKMREDGGGKDRAKSKKVHRVSKWMLPEKSRGTYLERANCFPPPV<br>FIISISLAELAVFIYAVWKPQKQWITLDTGILESPFIYSPEKREEAWRFISYMLVHAG |
| Host                          | Mouse  |
| Reactivity                    | Human  |
| Interspecies Antigen Sequence | Mouse (81); Rat (100)  |
| Quality Control Testing       | Antibody reactive against mammalian transfected lysate.  |
| Storage Buffer                | In 1x PBS, pH 7.4  |
| Storage Instruction           | Store at -20°C or lower. Aliquot to avoid repeated freezing and thawing.   |

## Applications

- Western Blot (Transfected lysate)

Western Blot analysis of RHBDL2 expression in transfected 293T cell line ([H00054933-T01](#)) by RHBDL2 MaxPab polyclonal antibody.

Lane 1: RHBDL2 transfected lysate(13.31 KDa).

Lane 2: Non-transfected lysate.

[Protocol Download](#)

## Gene Info — RHBDL2

Entrez GeneID [54933](#)

GeneBank Accession# [BC013103.1](#)

Protein Accession# [AAH13103.1](#)

Gene Name RHBDL2

Gene Alias MGC16997, RRP2

Gene Description rhomboid, veinlet-like 2 (Drosophila)

Omim ID [608962](#)

Gene Ontology [Hyperlink](#)

**Gene Summary** The protein encoded by this gene is a member of the rhomboid family of integral membrane proteins. This family contains proteins that are related to Drosophila rhomboid protein. Members of this family are found in both prokaryotes and eukaryotes and are thought to function as intramembrane serine proteases. The encoded protein is thought to release soluble growth factors by proteolytic cleavage of certain membrane-bound substrates, including ephrin B2 and ephrin B3. [provided by RefSeq]

**Other Designations** OTTHUMP00000000546[rhomboid (veinlet, Drosophila)-like 2][rhomboid-related protein 2]

## Disease

- [Genetic Predisposition to Disease](#)
- [Neoplasm Invasiveness](#)

- [Prostatic Neoplasms](#)