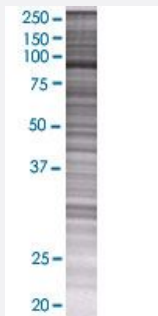


# WHSC1L1 293T Cell Transient Overexpression Lysate(Denatured)

Catalog # H00054904-T02

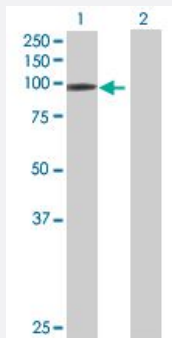
Size 100 uL

## Applications



### SDS-PAGE Gel

WHSC1L1 transfected lysate.



### Western Blot

Lane 1: WHSC1L1 transfected lysate ( 71.06 KDa)

Lane 2: Non-transfected lysate.

## Specification

|                               |                          |
|-------------------------------|--------------------------|
| Transfected Cell Line         | 293T                     |
| Plasmid                       | pCMV-WHSC1L1 full-length |
| Host                          | Human                    |
| Theoretical MW (kDa)          | 71.06                    |
| Interspecies Antigen Sequence | Mouse (91); Rat (89)     |

**Quality Control Testing**

Transient overexpression cell lysate was tested with Anti-WHSC1L1 antibody ([H00054904-B02](#)) by Western Blots.  
SDS-PAGE Gel  
WHSC1L1 transfected lysate.  
Western Blot  
Lane 1: WHSC1L1 transfected lysate ( 71.06 KDa)  
Lane 2: Non-transfected lysate.

**Storage Buffer**

1X Sample Buffer (50 mM Tris-HCl, 2% SDS, 10% glycerol, 300 mM 2-mercaptoethanol, 0.01% Bromophenol blue)

**Storage Instruction**

Store at -80°C. Aliquot to avoid repeated freezing and thawing.

## Applications

- Western Blot

## Gene Info — WHSC1L1

**Entrez GeneID**

[54904](#)

**GeneBank Accession#**

[NM\\_017778.2](#)

**Protein Accession#**

[NP\\_060248.2](#)

**Gene Name**

WHSC1L1

**Gene Alias**

DKFZp667H044, FLJ20353, MGC126766, MGC142029, NSD3, pp14328

**Gene Description**

Wolf-Hirschhorn syndrome candidate 1-like 1

**Omim ID**

[601626 607083](#)

**Gene Ontology**

[Hyperlink](#)

**Gene Summary**

This gene is related to the Wolf-Hirschhorn syndrome candidate-1 gene and encodes a protein with PWWP (proline-tryptophan-tryptophan-proline) domains. The function of the protein has not been determined. Two alternatively spliced variants have been described. [provided by RefSeq]

**Other Designations**

WHSC1L1 protein|Wolf-Hirschhorn syndrome candidate 1-like 1 protein

## Pathway

- [Lysine degradation](#)