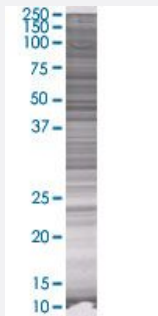


MS4A12 293T Cell Transient Overexpression Lysate(Denatured)

Catalog # H00054860-T01

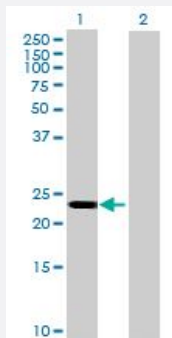
Size 100 uL

Applications



SDS-PAGE Gel

MS4A12 transfected lysate.



Western Blot

Lane 1: MS4A12 transfected lysate (29.48 KDa)

Lane 2: Non-transfected lysate.

Specification

Transfected Cell Line 293T

Plasmid pCMV-MS4A12 full-length

Host Human

Theoretical MW (kDa) 29.48

Quality Control Testing Transient overexpression cell lysate was tested with Anti-MS4A12 antibody ([H00054860-B01](#)) by Western Blots.
SDS-PAGE Gel
MS4A12 transfected lysate.
Western Blot
Lane 1: MS4A12 transfected lysate (29.48 KDa)
Lane 2: Non-transfected lysate.

Storage Buffer

1X Sample Buffer (50 mM Tris-HCl, 2% SDS, 10% glycerol, 300 mM 2-mercaptoethanol, 0.01% Bromophenol blue)

Storage Instruction

Store at -80°C. Aliquot to avoid repeated freezing and thawing.

Applications

- Western Blot

Gene Info — MS4A12

Entrez GeneID[54860](#)**GeneBank Accession#**[BC029793.1](#)**Protein Accession#**[AAH29793.1](#)**Gene Name**

MS4A12

Gene Alias

Ms4a10

Gene Description

membrane-spanning 4-domains, subfamily A, member 12

Omim ID[606550](#)**Gene Ontology**[Hyperlink](#)**Gene Summary**

The protein encoded by this gene is a cell surface protein found primarily in the apical membrane of colonocytes. Silencing of this gene in colon cancer cells inhibits the proliferation, cell motility, and chemotactic invasion of cells. This gene is part of a cluster of similar genes found on chromosome 11. Two transcript variants encoding different isoforms have been found for this gene. [provided by RefSeq]

Other Designations

-