

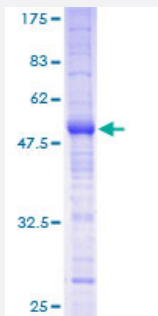
Full-Length

## MS4A12 (Human) Recombinant Protein (P01)

Catalog # H00054860-P01

Size 25 ug, 10 ug

### Applications



### Specification

#### Product Description

Human MS4A12 full-length ORF ( AAH29793, 1 a.a. - 267 a.a.) recombinant protein with GST-tag at N-terminal.

#### Sequence

MMSSKPTSHAEVNETIPNPYPSSFMAPGFQQPLGSINLENQAQGAQRAQPYGITSPGIFASSQP  
GQGNIQMINPSVGTAVMNFKEEAKALGVIQIMVGLMHIGFGIVLCLISFSFREVLGFASTAVIGGYPF  
WGGLSFIIISGLSVSASKELSRCLVKGSLGMNIVSSILAFIGVILLVDMCINGVAGQDYWAVLSGK  
GISATLMIFSLLIEFFVACATAHFANQANTTTNMSVLVIPNMYESNPVTPASSAPPRCANNYSANAP  
K

#### Host

Wheat Germ (in vitro)

#### Theoretical MW (kDa)

55.11

#### Preparation Method

[in vitro wheat germ expression system](#)

#### Purification

Glutathione Sepharose 4 Fast Flow

#### Quality Control Testing

12.5% SDS-PAGE Stained with Coomassie Blue.

#### Storage Buffer

50 mM Tris-HCl, 10 mM reduced Glutathione, pH=8.0 in the elution buffer.

#### Storage Instruction

Store at -80°C. Aliquot to avoid repeated freezing and thawing.

#### Note

Best use within three months from the date of receipt of this protein.

## Applications

- Enzyme-linked Immunoabsorbent Assay
- Western Blot (Recombinant protein)
- Antibody Production
- Protein Array

## Gene Info — MS4A12

**Entrez GeneID** [54860](#)

**GeneBank Accession#** [BC029793](#)

**Protein Accession#** [AAH29793](#)

**Gene Name** MS4A12

**Gene Alias** Ms4a10

**Gene Description** membrane-spanning 4-domains, subfamily A, member 12

**Omim ID** [606550](#)

**Gene Ontology** [Hyperlink](#)

**Gene Summary** The protein encoded by this gene is a cell surface protein found primarily in the apical membrane of colonocytes. Silencing of this gene in colon cancer cells inhibits the proliferation, cell motility, and chemotactic invasion of cells. This gene is part of a cluster of similar genes found on chromosome 11. Two transcript variants encoding different isoforms have been found for this gene. [provided by RefSeq]

**Other Designations** -