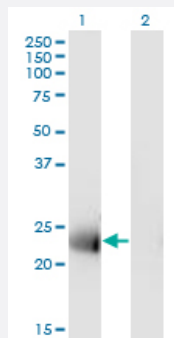


MS4A12 monoclonal antibody (M01), clone 4F4

Catalog # H00054860-M01

Size 100 ug

Applications

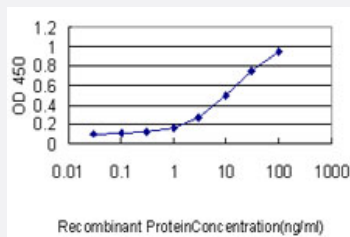


Western Blot (Transfected lysate)

Western Blot analysis of MS4A12 expression in transfected 293T cell line by MS4A12 monoclonal antibody (M01), clone 4F4.

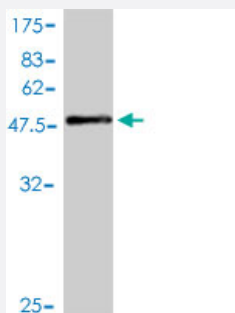
Lane 1: MS4A12 transfected lysate (Predicted MW: 28.1 KDa).

Lane 2: Non-transfected lysate.



Sandwich ELISA (Recombinant protein)

Detection limit for recombinant GST tagged MS4A12 is approximately 0.3ng/ml as a capture antibody.



Western Blot detection against Immunogen (55.11 KDa) .

Specification

Product Description

Mouse monoclonal antibody raised against a full length recombinant MS4A12.

Immunogen	MS4A12 (AAH29793, 1 a.a. ~ 267 a.a) full-length recombinant protein with GST tag. MW of the GST tag alone is 26 KDa.
Sequence	MMSSKPTSHAEVNETIPNPYPSSFMAPGFQQPLGSINLENQAQGAQRAQPYGITSPGIFASSQP GQGNIQMINPSVGTAVMNFKEEAKALGVIQIMVGLMHIGFGMLCLISFSFREVLGFASTAVIGGYPF WGGLSFIISGSLSVSASKELSRCLVKGSLGMNIVSSILAFIGVILLVDMCINGVAGQDYWAVLSGK GISATLMIFSLLFFVACATAHFANQANTTTNMSVLVIPNMYESNPVTPASSSAPPRCNNYSANAP K
Host	Mouse
Reactivity	Human
Isotype	IgG1 kappa
Quality Control Testing	Antibody Reactive Against Recombinant Protein. Western Blot detection against Immunogen (55.11 KDa) .
Storage Buffer	In 1x PBS, pH 7.4
Storage Instruction	Store at -20°C or lower. Aliquot to avoid repeated freezing and thawing.

Applications

- Western Blot (Transfected lysate)

Western Blot analysis of MS4A12 expression in transfected 293T cell line by MS4A12 monoclonal antibody (M01), clone 4F4.

Lane 1: MS4A12 transfected lysate (Predicted MW: 28.1 KDa).

Lane 2: Non-transfected lysate.

[Protocol Download](#)

- Western Blot (Recombinant protein)

[Protocol Download](#)

- Sandwich ELISA (Recombinant protein)

Detection limit for recombinant GST tagged MS4A12 is approximately 0.3ng/ml as a capture antibody.

[Protocol Download](#)

- ELISA

Gene Info — MS4A12

Entrez GeneID	54860
GeneBank Accession#	BC029793
Protein Accession#	AAH29793
Gene Name	MS4A12
Gene Alias	Ms4a10
Gene Description	membrane-spanning 4-domains, subfamily A, member 12
Omim ID	606550
Gene Ontology	Hyperlink
Gene Summary	<p>The protein encoded by this gene is a cell surface protein found primarily in the apical membrane of colonocytes. Silencing of this gene in colon cancer cells inhibits the proliferation, cell motility, and chemotactic invasion of cells. This gene is part of a cluster of similar genes found on chromosome 11. Two transcript variants encoding different isoforms have been found for this gene. [provided by RefSeq]</p>
Other Designations	-