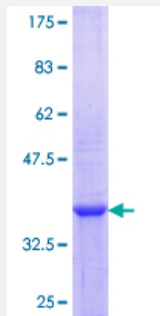


APT_X (Human) Recombinant Protein (Q01)

Catalog # H00054840-Q01

Size 25 ug, 10 ug

Applications



Specification

Product Description	Human APT _X partial ORF (NP_778241.1, 69 a.a. - 166 a.a.) recombinant protein with GST-tag at N-terminal.
Sequence	KLRFRLGYHAIPSM SHVHLHVISQDFDSPCLKNKKHWNSFNTEYFLESQAVIEMVQEAGRVTVRD GMPELLKLPLRCHECQQLLP SIPQLKEHLRKHW
Host	Wheat Germ (in vitro)
Theoretical MW (kDa)	36.52
Interspecies Antigen Sequence	Mouse (83); Rat (79)
Preparation Method	in vitro wheat germ expression system
Purification	Glutathione Sepharose 4 Fast Flow
Quality Control Testing	12.5% SDS-PAGE Stained with Coomassie Blue.
Storage Buffer	50 mM Tris-HCl, 10 mM reduced Glutathione, pH=8.0 in the elution buffer.
Storage Instruction	Store at -80°C. Aliquot to avoid repeated freezing and thawing.
Note	Best use within three months from the date of receipt of this protein.

Applications

- Enzyme-linked Immunoabsorbent Assay
- Western Blot (Recombinant protein)
- Antibody Production
- Protein Array

Gene Info — APTX

Entrez GeneID [54840](#)

GeneBank Accession# [NM_175071](#)

Protein Accession# [NP_778241.1](#)

Gene Name APTX

Gene Alias AOA, AOA1, AXA1, EAOH, EOAHA, FHA-HIT, FLJ20157, MGC1072

Gene Description aprataxin

Omim ID [208920](#) [606350](#) [607426](#)

Gene Ontology [Hyperlink](#)

Gene Summary This gene encodes a member of the histidine triad (HIT) superfamily, some of which have nucleotide-binding and diadenosine polyphosphate hydrolase activities. The encoded protein may play a role in single-stranded DNA repair. Mutations in this gene have been associated with ataxia-ocular apraxia. Multiple transcript variants encoding distinct isoforms have been identified for this gene, however, the full length nature of some variants has not been determined. [provided by RefSeq]

Other Designations OTTHUMP00000021188|ataxia 1, early onset with hypoalbuminemia

Disease

- [Genetic Predisposition to Disease](#)
- [Prostatic Neoplasms](#)