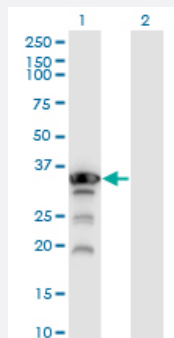


# APT<sub>X</sub> monoclonal antibody (M02), clone 2H6

Catalog # H00054840-M02

Size 100 ug

## Applications

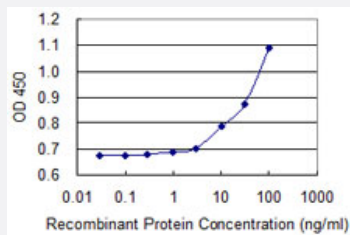


### Western Blot (Transfected lysate)

Western Blot analysis of APT<sub>X</sub> expression in transfected 293T cell line by APT<sub>X</sub> monoclonal antibody (M02), clone 2H6.

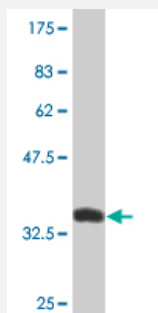
Lane 1: APT<sub>X</sub> transfected lysate (Predicted MW: 29.1 kDa).

Lane 2: Non-transfected lysate.



### Sandwich ELISA (Recombinant protein)

Detection limit for recombinant GST tagged APT<sub>X</sub> is 3 ng/ml as a capture antibody.



Western Blot detection against Immunogen (36.52 kDa) .

## Specification

### Product Description

Mouse monoclonal antibody raised against a partial recombinant APT<sub>X</sub>.

<b>Immunogen</b>	APT <sub>X</sub> (NP_778241.1, 69 a.a. ~ 166 a.a) partial recombinant protein with GST tag. MW of the GST tag alone is 26 KDa.
<b>Sequence</b>	KLRFR <sub>L</sub> LG <sub>Y</sub> HAIP <sub>S</sub> MSH <sub>V</sub> HLH <sub>V</sub> ISQDFD <sub>S</sub> PCLKNKKH <sub>W</sub> NSFNTEY <sub>F</sub> LESQAVIEM <sub>V</sub> QEAGRVT <sub>V</sub> RD GMPELLKLPLRCHECQQL <sub>L</sub> PSIPQLKEHLR <sub>K</sub> HW
<b>Host</b>	Mouse
<b>Reactivity</b>	Human
<b>Interspecies Antigen Sequence</b>	Mouse (83); Rat (79)
<b>Isotype</b>	IgG2a Lambda
<b>Quality Control Testing</b>	Antibody Reactive Against Recombinant Protein. Western Blot detection against Immunogen (36.52 KDa) .
<b>Storage Buffer</b>	In 1x PBS, pH 7.4
<b>Storage Instruction</b>	Store at -20°C or lower. Aliquot to avoid repeated freezing and thawing.

## Applications

- Western Blot (Transfected lysate)

Western Blot analysis of APT<sub>X</sub> expression in transfected 293T cell line by APT<sub>X</sub> monoclonal antibody (M02), clone 2H6.

Lane 1: APT<sub>X</sub> transfected lysate (Predicted MW: 29.1 KDa).

Lane 2: Non-transfected lysate.

[Protocol Download](#)

- Western Blot (Recombinant protein)

[Protocol Download](#)

- Sandwich ELISA (Recombinant protein)

Detection limit for recombinant GST tagged APT<sub>X</sub> is 3 ng/ml as a capture antibody.

[Protocol Download](#)

- ELISA

## Gene Info — APT<sub>X</sub>

Entrez GeneID	<a href="#">54840</a>
GeneBank Accession#	<a href="#">NM_175071</a>
Protein Accession#	<a href="#">NP_778241.1</a>
Gene Name	APTX
Gene Alias	AOA, AOA1, AXA1, EAOH, EOAHA, FHA-HIT, FLJ20157, MGC1072
Gene Description	aprataxin
Omim ID	<a href="#">208920</a> <a href="#">606350</a> <a href="#">607426</a>
Gene Ontology	<a href="#">Hyperlink</a>
Gene Summary	This gene encodes a member of the histidine triad (HIT) superfamily, some of which have nucleotide-binding and diadenosine polyphosphate hydrolase activities. The encoded protein may play a role in single-stranded DNA repair. Mutations in this gene have been associated with ataxia-ocular apraxia. Multiple transcript variants encoding distinct isoforms have been identified for this gene, however, the full length nature of some variants has not been determined. [provided by RefSeq]
Other Designations	OTTHUMP00000021188 ataxia 1, early onset with hypoalbuminemia

## Disease

- [Genetic Predisposition to Disease](#)
- [Prostatic Neoplasms](#)