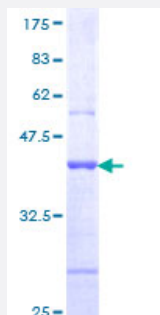


PC-LKC (Human) Recombinant Protein (Q01)

Catalog # H00054825-Q01

Size 25 ug, 10 ug

Applications



Specification

Product Description	Human PC-LKC partial ORF (NP_060145, 210 a.a. - 318 a.a.) recombinant protein with GST-tag at N-terminal.
Sequence	GGMYHNTFTIQCSLPVFLSISVVDQPDLPQFVREFYSASVAEDAAKGTSVLTVEAVDGDKGIND PVIYSISYSTRPGWFDIGADGVIRVNGSLDREQLLEADEEVQLQ
Host	Wheat Germ (in vitro)
Theoretical MW (kDa)	37.73
Interspecies Antigen Sequence	Mouse (75); Rat (70)
Preparation Method	in vitro wheat germ expression system
Purification	Glutathione Sepharose 4 Fast Flow
Quality Control Testing	12.5% SDS-PAGE Stained with Coomassie Blue.
Storage Buffer	50 mM Tris-HCl, 10 mM reduced Glutathione, pH=8.0 in the elution buffer.
Storage Instruction	Store at -80°C. Aliquot to avoid repeated freezing and thawing.
Note	Best use within three months from the date of receipt of this protein.

Applications

- Enzyme-linked Immunoabsorbent Assay
- Western Blot (Recombinant protein)
- Antibody Production
- Protein Array

Gene Info — PCDH24

Entrez GeneID	54825
---------------	-----------------------

GeneBank Accession#	NM_017675
---------------------	---------------------------

Protein Accession#	NP_060145
--------------------	---------------------------

Gene Name	PCDH24
-----------	--------

Gene Alias	FLJ20124, FLJ20383, MGC163154, PC-LKC, PCLKC
------------	--

Gene Description	protocadherin 24
------------------	------------------

Gene Ontology	Hyperlink
---------------	---------------------------

Gene Summary	This gene is a member of the protocadherin family, which represents a subset of the larger cadherin superfamily. The members of the protocadherin family encode non-classical cadherins that function as calcium-dependent cell-cell adhesion molecules. The kidney-expressed gene product has a signal peptide, nine cadherin repeat domains and a unique cytoplasmic region. This protocadherin represents a new candidate for tumor suppression. [provided by RefSeq]
--------------	--

Other Designations	protocadherin LKC
--------------------	-------------------