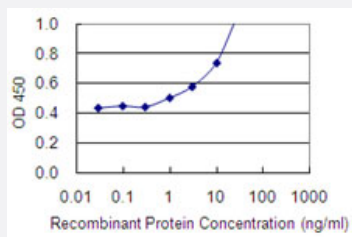


PC-LKC monoclonal antibody (M01), clone 1D2

Catalog # H00054825-M01

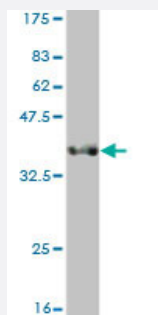
Size 100 ug

Applications



Sandwich ELISA (Recombinant protein)

Detection limit for recombinant GST tagged PCDH24 is 0.3 ng/ml as a capture antibody.



Western Blot detection against Immunogen (37.73 KDa) .

Specification

Product Description

Mouse monoclonal antibody raised against a partial recombinant PCLKC.

Immunogen

PC-LKC (NP_060145, 210 a.a. ~ 318 a.a) partial recombinant protein with GST tag. MW of the GST tag alone is 26 KDa.

Sequence

GGMYHNTFTIQCSLPVFLSISVVDQPDLPQFVREFYASVAEDAAKGTSVLTVEAVDGDKGIND
PVIYSISYSTRPGWFDIGADGVIRVNGSLDREQLLEADEEVQLQ

Host

Mouse

Reactivity

Human

| | |
|-------------------------------|--|
| Interspecies Antigen Sequence | Mouse (75); Rat (70) |
| Isotype | IgG3 Kappa |
| Quality Control Testing | Antibody Reactive Against Recombinant Protein. Western Blot detection against Immunogen (37.73 KDa) . |
| Storage Buffer | In 1x PBS, pH 7.4 |
| Storage Instruction | Store at -20°C or lower. Aliquot to avoid repeated freezing and thawing. |

Applications

- Western Blot (Recombinant protein)

[Protocol Download](#)

- Sandwich ELISA (Recombinant protein)

Detection limit for recombinant GST tagged PCDH24 is 0.3 ng/ml as a capture antibody.

[Protocol Download](#)

- ELISA

Gene Info — PCDH24

| | |
|---------------------|--|
| Entrez GeneID | 54825 |
| GeneBank Accession# | NM_017675 |
| Protein Accession# | NP_060145 |
| Gene Name | PCDH24 |
| Gene Alias | FLJ20124, FLJ20383, MGC163154, PC-LKC, PCLKC |
| Gene Description | protocadherin 24 |
| Gene Ontology | Hyperlink |

Gene Summary

This gene is a member of the protocadherin family, which represents a subset of the larger cadherin superfamily. The members of the protocadherin family encode non-classical cadherins that function as calcium-dependent cell-cell adhesion molecules. The kidney-expressed gene product has a signal peptide, nine cadherin repeat domains and a unique cytoplasmic region. This protocadherin represents a new candidate for tumor suppression. [provided by RefSeq]

Other Designations

protocadherin LKC