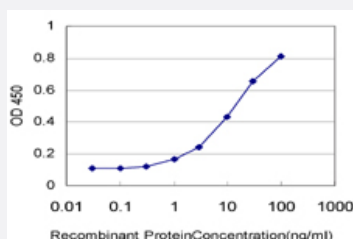


# DYM monoclonal antibody (M01), clone 1C2

Catalog # H00054808-M01

Size 100 ug

## Applications



### Sandwich ELISA (Recombinant protein)

Detection limit for recombinant GST tagged DYM is approximately 1ng/ml as a capture antibody.

## Specification

<b>Product Description</b>	Mouse monoclonal antibody raised against a partial recombinant DYM.
<b>Immunogen</b>	DYM (NP_060123, 343 a.a. ~ 430 a.a) partial recombinant protein with GST tag. MW of the GST tag alone is 26 KDa.
<b>Sequence</b>	QTSDQATLLLYTLLHQNSNIRTYMLARTDMENLVLPILYHVEERNSHHVYMALILLILTDDGFNR SIHEVILKNITWYSERVL
<b>Host</b>	Mouse
<b>Reactivity</b>	Human
<b>Interspecies Antigen Sequence</b>	Mouse (94); Rat (91)
<b>Isotype</b>	IgG1 Kappa
<b>Quality Control Testing</b>	Antibody Reactive Against Recombinant Protein.
<b>Storage Buffer</b>	In 1x PBS, pH 7.4
<b>Storage Instruction</b>	Store at -20°C or lower. Aliquot to avoid repeated freezing and thawing.

## Applications

- Sandwich ELISA (Recombinant protein)

Detection limit for recombinant GST tagged DYM is approximately 1ng/ml as a capture antibody.

[Protocol Download](#)

- ELISA

## Gene Info — DYM

Entrez GeneID	<a href="#">54808</a>
---------------	-----------------------

GeneBank Accession#	<a href="#">NM_017653</a>
---------------------	---------------------------

Protein Accession#	<a href="#">NP_060123</a>
--------------------	---------------------------

Gene Name	DYM
-----------	-----

Gene Alias	DMC, FLJ20071, FLJ90130, SMC
------------	------------------------------

Gene Description	dymeclin
------------------	----------

Omim ID	<a href="#">223800 607326 607461</a>
---------	--------------------------------------

Gene Ontology	<a href="#">Hyperlink</a>
---------------	---------------------------

Gene Summary	This gene encodes a protein which is necessary for normal skeletal development and brain function. Mutations in this gene are associated with two types of recessive osteochondrodysplasia, Dyggve-Melchior-Clausen (DMC) dysplasia and Smith-McCort (SMC) dysplasia, which involve both skeletal defects and mental retardation. [provided by RefSeq]
--------------	--

Other Designations	-
--------------------	---

## Disease

- [Diabetes Mellitus](#)
- [Tobacco Use Disorder](#)