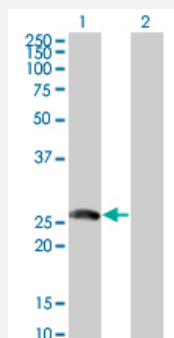


BTG4 monoclonal antibody (M07), clone 1A6

Catalog # H00054766-M07

Size 100 ug

Applications

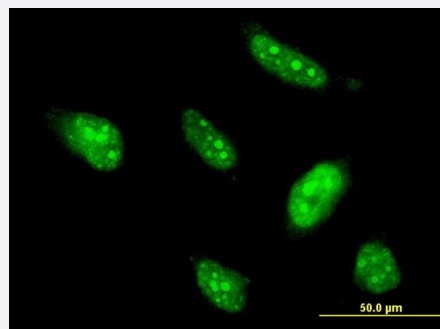


Western Blot (Transfected lysate)

Western Blot analysis of BTG4 expression in transfected 293T cell line by BTG4 monoclonal antibody (M07), clone 1A6.

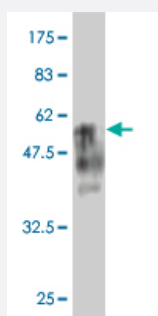
Lane 1: BTG4 transfected lysate(24 KDa).

Lane 2: Non-transfected lysate.



Immunofluorescence

Immunofluorescence of monoclonal antibody to BTG4 on HeLa cell . [antibody concentration 10 ug/ml]



Western Blot detection against Immunogen (48.4 KDa) .

Specification

Product Description

Mouse monoclonal antibody raised against a full length recombinant BTG4.

Immunogen	BTG4 (AAH31045, 1 a.a. ~ 206 a.a) full-length recombinant protein with GST tag. MW of the GST tag alone is 26 KDa.
Sequence	MRDEIATTVFFVTRLVKKHDKLSKQQIEDFAEKLMTILFETYRSHWHSDCPSKGQAFRCIRINNNQN KDPILERACVESNVD FSHLGLPKEMTWVDPFEVCCRYGEKNHPFTVASFKGRWEEWELYQQIS YAVSRASSDVSSGTSCDEESCSKEPRVIPKVSNP KSIYQVKSVPVLFYTFFLSNSKKNALIMKTKK QKNMERTKL
Host	Mouse
Reactivity	Human
Interspecies Antigen Sequence	Mouse (74)
Isotype	IgG2b Kappa
Quality Control Testing	Antibody Reactive Against Recombinant Protein. Western Blot detection against Immunogen (48.4 KDa) .
Storage Buffer	In 1x PBS, pH 7.4
Storage Instruction	Store at -20°C or lower. Aliquot to avoid repeated freezing and thawing.

Applications

- Western Blot (Transfected lysate)

Western Blot analysis of BTG4 expression in transfected 293T cell line by BTG4 monoclonal antibody (M07), clone 1A6.

Lane 1: BTG4 transfected lysate(24 KDa).

Lane 2: Non-transfected lysate.

[Protocol Download](#)

- Western Blot (Recombinant protein)

[Protocol Download](#)

- ELISA

- Immunofluorescence

Immunofluorescence of monoclonal antibody to BTG4 on HeLa cell . [antibody concentration 10 ug/ml]

Gene Info — BTG4

Entrez GeneID	54766
GeneBank Accession#	BC031045
Protein Accession#	AAH31045
Gene Name	BTG4
Gene Alias	MGC33003, PC3B
Gene Description	B-cell translocation gene 4
Omim ID	605673
Gene Ontology	Hyperlink
Gene Summary	The protein encoded by this gene is a member of the BTG/Tob family. This family has structurally related proteins that appear to have antiproliferative properties. This encoded protein can induce G1 arrest in the cell cycle. [provided by RefSeq]
Other Designations	-

Disease

- [Genetic Predisposition to Disease](#)
- [Liver Neoplasms](#)