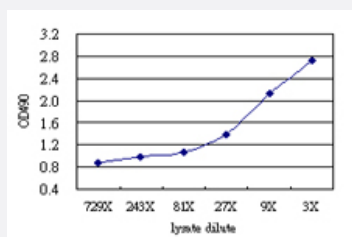


KLHDC4 (Human) Matched Antibody Pair

Catalog # H00054758-AP51

Size 1 Set

Applications



Sandwich ELISA detection sensitivity ranging from approximately 729x to 3x dilution of the KLHDC4 293T overexpression lysate (non-denatured).

Specification

Product Description	This antibody pair set comes with a matched antibody pair to detect and quantify the protein level of human KLHDC4.
Reactivity	Human
Interspecies Antigen Sequence	Mouse (79)
Quality Control Testing	Standard curve using KLHDC4 293T overexpression lysate (non-denatured) as an analyte. Sandwich ELISA detection sensitivity ranging from approximately 729x to 3x dilution of the KLHDC4 293T overexpression lysate (non-denatured).
Supplied Product	Antibody pair set content: 1. Capture antibody: mouse monoclonal anti-KLHDC4 (100 ug) 2. Detection antibody: rabbit purified polyclonal anti-KLHDC4 (50 ug) *Reagents are sufficient for at least 3-5 x 96 well plates using recommended protocols.
Storage Instruction	Store reagents of the antibody pair set at -20°C or lower. Please aliquot to avoid repeated freeze thaw cycle. Reagents should be returned to -20°C storage immediately after use.

Applications

- ELISA Pair (Transfected lysate)

[Protocol Download](#)

Gene Info — KLHDC4

Entrez GeneID	54758
---------------	-----------------------

Gene Name	KLHDC4
-----------	--------

Gene Alias	DKFZp434G0522, FLJ00104
------------	-------------------------

Gene Description	kelch domain containing 4
------------------	---------------------------

Gene Ontology	Hyperlink
---------------	---------------------------

Other Designations	-
--------------------	---