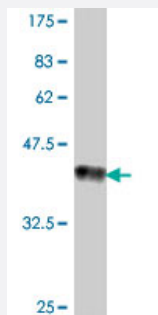


IL17RD polyclonal antibody (A01)

Catalog # H00054756-A01

Size 50 uL

Applications



Western Blot detection against Immunogen (37.11 KDa) .

Specification

| | |
|--------------------------------------|--|
| Product Description | Mouse polyclonal antibody raised against a partial recombinant IL17RD. |
| Immunogen | IL17RD (NP_060033, 1 a.a. ~ 100 a.a) partial recombinant protein with GST tag. |
| Sequence | MESQPFLNMKFETDYFVKVVPFPSIKNESNYHPFFFRTRACDLLLQPDNLACKPFWKPRNLNISQ HGSDMQVSFDHAPHNFGFRFFYLHYCLKHEGPFKR |
| Host | Mouse |
| Reactivity | Human |
| Interspecies Antigen Sequence | Mouse (92); Rat (90) |
| Quality Control Testing | Antibody Reactive Against Recombinant Protein. Western Blot detection against Immunogen (37.11 KDa) . |
| Storage Buffer | 50 % glycerol |
| Storage Instruction | Store at -20°C or lower. Aliquot to avoid repeated freezing and thawing. |

Applications

- Western Blot (Recombinant protein)

[Protocol Download](#)

- ELISA

Gene Info — IL17RD

Entrez GeneID [54756](#)

GeneBank Accession# [NM_017563](#)

Protein Accession# [NP_060033](#)

Gene Name IL17RD

Gene Alias DKFZp434N1928, FLJ35755, IL-17RD, IL17RLM, MGC133309, SEF

Gene Description interleukin 17 receptor D

Omim ID [606807](#)

Gene Ontology [Hyperlink](#)

Gene Summary Fibroblast growth factors (FGFs; see MIM 603726) are secreted proteins involved in cellular proliferation, migration, differentiation, and survival. FGF activity is negatively regulated by members of the 'sprouty' family (e.g., SPRY1, MIM 602465). The SEF protein is a modulator of FGF signaling.[supplied by OMIM]

Other Designations -

Disease

- [Kidney Failure](#)