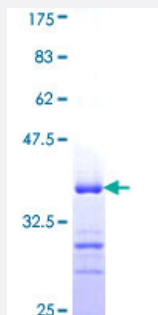


# FBLIM1 (Human) Recombinant Protein (Q01)

Catalog # H00054751-Q01

Size 25 ug, 10 ug

## Applications



## Specification

<b>Product Description</b>	Human FBLIM1 partial ORF ( NP_060026, 270 a.a. - 373 a.a.) recombinant protein with GST-tag at N-terminal.
<b>Sequence</b>	VTCARCIGDESFALGSQNEVYCLDDFYRKFAFVCSICENPIIPRDGKDAFKIECMGRNFHENCYRC EDCRILLSVEPTDQGCYPLNNHLFCKPCHVKRSAAGCC
<b>Host</b>	Wheat Germ (in vitro)
<b>Theoretical MW (kDa)</b>	37.18
<b>Interspecies Antigen Sequence</b>	Mouse (59); Rat (74)
<b>Preparation Method</b>	<a href="#">in vitro wheat germ expression system</a>
<b>Purification</b>	Glutathione Sepharose 4 Fast Flow
<b>Quality Control Testing</b>	12.5% SDS-PAGE Stained with Coomassie Blue.
<b>Storage Buffer</b>	50 mM Tris-HCl, 10 mM reduced Glutathione, pH=8.0 in the elution buffer.
<b>Storage Instruction</b>	Store at -80°C. Aliquot to avoid repeated freezing and thawing.
<b>Note</b>	Best use within three months from the date of receipt of this protein.

## Applications

- Enzyme-linked Immunoabsorbent Assay
- Western Blot (Recombinant protein)
- Antibody Production
- Protein Array

## Gene Info — FBLIM1

Entrez GeneID [54751](#)

GeneBank Accession# [NM\\_017556](#)

Protein Accession# [NP\\_060026](#)

Gene Name FBLIM1

Gene Alias CAL, DKFZp434G171, FBLP-1, FBLP1, RP11-169K16.5

Gene Description filamin binding LIM protein 1

Omim ID [607747](#)

Gene Ontology [Hyperlink](#)

**Gene Summary** This gene encodes a protein with an N-terminal filamin-binding domain, a central proline-rich domain, and, multiple C-terminal LIM domains. This protein localizes at cell junctions and may link cell adhesion structures to the actin cytoskeleton. This protein may be involved in the assembly and stabilization of actin-filaments and likely plays a role in modulating cell adhesion, cell morphology and cell motility. This protein also localizes to the nucleus and may affect cardiomyocyte differentiation after binding with the CSX/NKX2-5 transcription factor. Alternative splicing results in multiple transcript variants encoding different isoforms. [provided by RefSeq]

**Other Designations** CSX-associated LIM|MIG2-interacting protein|OTTHUMP00000003118|OTTHUMP00000003119|OTTHUMP00000003120|filamin-binding LIM protein-1|migfilin|mitogen-inducible 2 interacting protein