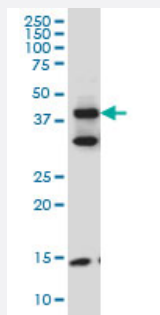


FBLIM1 monoclonal antibody (M10), clone 5E11

Catalog # H00054751-M10

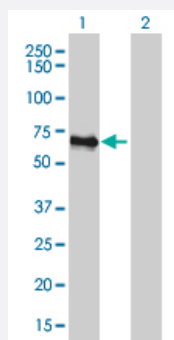
Size 100 ug

Applications



Western Blot (Cell lysate)

FBLIM1 monoclonal antibody (M10), clone 5E11 Western Blot analysis of FBLIM1 expression in HepG2 (Cat # L019V1).

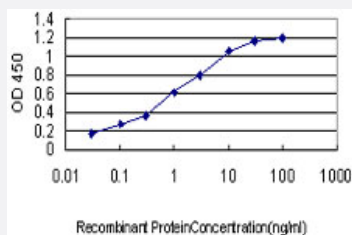


Western Blot (Transfected lysate)

Western Blot analysis of FBLIM1 expression in transfected 293T cell line by FBLIM1 monoclonal antibody (M10), clone 5E11.

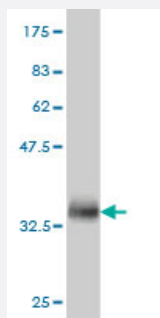
Lane 1: FBLIM1 transfected lysate(41 KDa).

Lane 2: Non-transfected lysate.



Sandwich ELISA (Recombinant protein)

Detection limit for recombinant GST tagged FBLIM1 is approximately 0.03ng/ml as a capture antibody.



Western Blot detection against Immunogen (37.18 KDa) .

Specification

Product Description	Mouse monoclonal antibody raised against a partial recombinant FBLIM1.
Immunogen	FBLIM1 (NP_060026, 270 a.a. ~ 373 a.a) partial recombinant protein with GST tag. MW of the GST tag alone is 26 KDa.
Sequence	VTCARCIGDESFALGSQNEVYCLDDFYRKFAFVCSICENPIIPRDGKDAFKIECMGRNFHENCYRC EDCRILLSVEPTDQGCYPLNNHLFCKPCHVKRSAAGCC
Host	Mouse
Reactivity	Human
Interspecies Antigen Sequence	Mouse (59); Rat (74)
Isotype	IgG2a Kappa
Quality Control Testing	Antibody Reactive Against Recombinant Protein. Western Blot detection against Immunogen (37.18 KDa) .
Storage Buffer	In 1x PBS, pH 7.4
Storage Instruction	Store at -20°C or lower. Aliquot to avoid repeated freezing and thawing.

Applications

- Western Blot (Cell lysate)

FBLIM1 monoclonal antibody (M10), clone 5E11 Western Blot analysis of FBLIM1 expression in HepG2 (Cat # L019V1).

[Protocol Download](#)

- Western Blot (Transfected lysate)

Western Blot analysis of FBLIM1 expression in transfected 293T cell line by FBLIM1 monoclonal antibody (M10), clone 5E11.

Lane 1: FBLIM1 transfected lysate(41 KDa).

Lane 2: Non-transfected lysate.

[Protocol Download](#)

- Western Blot (Recombinant protein)

[Protocol Download](#)

- Sandwich ELISA (Recombinant protein)

Detection limit for recombinant GST tagged FBLIM1 is approximately 0.03ng/ml as a capture antibody.

[Protocol Download](#)

- ELISA

Gene Info — FBLIM1

Entrez GeneID [54751](#)

GeneBank Accession# [NM_017556](#)

Protein Accession# [NP_060026](#)

Gene Name FBLIM1

Gene Alias CAL, DKFZp434G171, FBLP-1, FBLP1, RP11-169K16.5

Gene Description filamin binding LIM protein 1

Omim ID [607747](#)

Gene Ontology [Hyperlink](#)

Gene Summary This gene encodes a protein with an N-terminal filamin-binding domain, a central proline-rich domain, and, multiple C-terminal LIM domains. This protein localizes at cell junctions and may link cell adhesion structures to the actin cytoskeleton. This protein may be involved in the assembly and stabilization of actin-filaments and likely plays a role in modulating cell adhesion, cell morphology and cell motility. This protein also localizes to the nucleus and may affect cardiomyocyte differentiation after binding with the CSX/NKX2-5 transcription factor. Alternative splicing results in multiple transcript variants encoding different isoforms. [provided by RefSeq]

Other Designations

CSX-associated LIM|MIT-1-interacting protein|OTTHUMP00000003118|OTTHUMP00000003119
|OTTHUMP00000003120|filamin-binding LIM protein-1|migfilin|mitogen-inducible 2 interacting pr
oteins

Publication Reference

- [Kindlin-1 Is Required for RhoGTPase-Mediated Lamellipodia Formation in Keratinocytes.](#)

Has C, Herz C, Zimina E, Qu HY, He Y, Zhang ZG, Wen TT, Gache Y, Aumailley M, Bruckner-Tuderman L.

The American Journal of Pathology 2009 Oct; 175(4):1442.

Application: WB-Ce, Human, Human keratinocytes