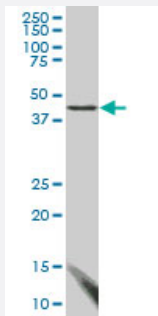


FBLIM1 monoclonal antibody (M03), clone 3F8

Catalog # H00054751-M03

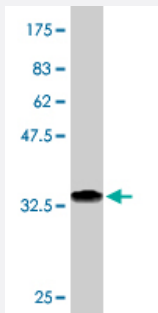
Size 100 ug

Applications



Western Blot (Cell lysate)

FBLIM1 monoclonal antibody (M03), clone 3F8. Western Blot analysis of FBLIM1 expression in HepG2 (Cat # L019V1).



Western Blot detection against Immunogen (37.18 KDa) .

Specification

Product Description	Mouse monoclonal antibody raised against a partial recombinant FBLIM1.
Immunogen	FBLIM1 (NP_060026, 270 a.a. ~ 373 a.a) partial recombinant protein with GST tag. MW of the GST tag alone is 26 KDa.
Sequence	VTCARCIGDESFALGSQNEVYCLDDFYRKFAFVCSICENPIIPRDGKDAFKIECMGRNFHENCYRC EDCRILLSVEPTDQGCYPLNNHLFCKPCHVKRSAAGCC
Host	Mouse
Reactivity	Human

Interspecies Antigen Sequence	Mouse (59); Rat (74)
Isotype	IgG2b Kappa
Quality Control Testing	Antibody Reactive Against Recombinant Protein. Western Blot detection against Immunogen (37.18 KDa) .
Storage Buffer	In 1x PBS, pH 7.4
Storage Instruction	Store at -20°C or lower. Aliquot to avoid repeated freezing and thawing.

Applications

- Western Blot (Cell lysate)

FBLIM1 monoclonal antibody (M03), clone 3F8. Western Blot analysis of FBLIM1 expression in HepG2 (Cat # L019V1).

[Protocol Download](#)

- Western Blot (Recombinant protein)

[Protocol Download](#)

- ELISA

Gene Info — FBLIM1

Entrez GeneID	54751
GeneBank Accession#	NM_017556
Protein Accession#	NP_060026
Gene Name	FBLIM1
Gene Alias	CAL, DKFZp434G171, FBLP-1, FBLP1, RP11-169K16.5
Gene Description	filamin binding LIM protein 1
Omim ID	607747
Gene Ontology	Hyperlink

Gene Summary

This gene encodes a protein with an N-terminal filamin-binding domain, a central proline-rich domain, and, multiple C-terminal LIM domains. This protein localizes at cell junctions and may link cell adhesion structures to the actin cytoskeleton. This protein may be involved in the assembly and stabilization of actin-filaments and likely plays a role in modulating cell adhesion, cell morphology and cell motility. This protein also localizes to the nucleus and may affect cardiomyocyte differentiation after binding with the CSX/NKX2-5 transcription factor. Alternative splicing results in multiple transcript variants encoding different isoforms. [provided by RefSeq]

Other Designations

CSX-associated LIM|MIT-1-interacting protein|OTTHUMP00000003118|OTTHUMP00000003119|OTTHUMP00000003120|filamin-binding LIM protein-1|migfilin|mitogen-inducible 2 interacting protein