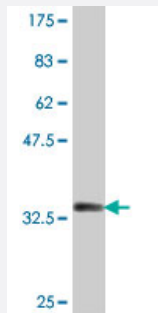


FBLIM1 polyclonal antibody (A01)

Catalog # H00054751-A01

Size 50 uL

Applications



Western Blot detection against Immunogen (37.55 KDa) .

Specification

Product Description	Mouse polyclonal antibody raised against a partial recombinant FBLIM1.
Immunogen	FBLIM1 (NP_060026, 270 a.a. ~ 373 a.a) partial recombinant protein with GST tag.
Sequence	VTCARCIGDESFALGSQNEVYCLDDFYRKFPVCSICENPIIPRDGKDAFKIECMGRNFHENCYRC EDCRILLSVEPTDQGCYPLNNHLFCKPCHVKRSAAGCC
Host	Mouse
Reactivity	Human
Interspecies Antigen Sequence	Mouse (59); Rat (74)
Quality Control Testing	Antibody Reactive Against Recombinant Protein. Western Blot detection against Immunogen (37.55 KDa) .
Storage Buffer	50 % glycerol
Storage Instruction	Store at -20°C or lower. Aliquot to avoid repeated freezing and thawing.

Applications

- Western Blot (Recombinant protein)

[Protocol Download](#)

- ELISA

Gene Info — FBLIM1

Entrez GeneID [54751](#)

GeneBank Accession# [NM_017556](#)

Protein Accession# [NP_060026](#)

Gene Name FBLIM1

Gene Alias CAL, DKFZp434G171, FBLP-1, FBLP1, RP11-169K16.5

Gene Description filamin binding LIM protein 1

Omim ID [607747](#)

Gene Ontology [Hyperlink](#)

Gene Summary This gene encodes a protein with an N-terminal filamin-binding domain, a central proline-rich domain, and, multiple C-terminal LIM domains. This protein localizes at cell junctions and may link cell adhesion structures to the actin cytoskeleton. This protein may be involved in the assembly and stabilization of actin-filaments and likely plays a role in modulating cell adhesion, cell morphology and cell motility. This protein also localizes to the nucleus and may affect cardiomyocyte differentiation after binding with the CSX/NKX2-5 transcription factor. Alternative splicing results in multiple transcript variants encoding different isoforms. [provided by RefSeq]

Other Designations CSX-associated LIM|MIG2-interacting protein|OTTHUMP00000003118|OTTHUMP00000003119|OTTHUMP00000003120|filamin-binding LIM protein-1|migfilin|mitogen-inducible 2 interacting protein