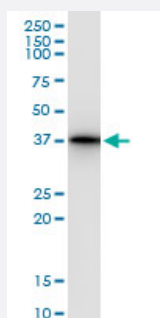


# LZTFL1 (Human) IP-WB Antibody Pair

Catalog # H00054585-PW1

Size 1 Set

## Applications



Immunoprecipitation of LZTFL1 transfected lysate using rabbit polyclonal anti-LZTFL1 and Protein A Magnetic Bead ([U0007](#)), and immunoblotted with mouse polyclonal anti-LZTFL1.

## Specification

<b>Product Description</b>	This IP-WB antibody pair set comes with one antibody for immunoprecipitation and another to detect the precipitated protein in western blot.
<b>Reactivity</b>	Human
<b>Interspecies Antigen Sequence</b>	Mouse (90); Rat (92)
<b>Quality Control Testing</b>	Immunoprecipitation-Western Blot (IP-WB) Immunoprecipitation of LZTFL1 transfected lysate using rabbit polyclonal anti-LZTFL1 and Protein A Magnetic Bead ( <a href="#">U0007</a> ), and immunoblotted with mouse polyclonal anti-LZTFL1.
<b>Supplied Product</b>	Antibody pair set content: 1. Antibody pair for IP: rabbit polyclonal anti-LZTFL1 (300 ul) 2. Antibody pair for WB: mouse polyclonal anti-LZTFL1 (50 ul)
<b>Storage Instruction</b>	Store reagents of the antibody pair set at -20°C or lower. Please aliquot to avoid repeated freeze thaw cycle. Reagents should be returned to -20°C storage immediately after use.

## Applications

- Immunoprecipitation-Western Blot

[Protocol Download](#)

## Gene Info — LZTFL1

Entrez GeneID	<a href="#">54585</a>
---------------	-----------------------

Gene Name	LZTFL1
-----------	--------

Gene Alias	FLJ36386
------------	----------

Gene Description	leucine zipper transcription factor-like 1
------------------	--

Omim ID	<a href="#">606568</a>
---------	------------------------

Gene Ontology	<a href="#">Hyperlink</a>
---------------	---------------------------

Other Designations	-
--------------------	---