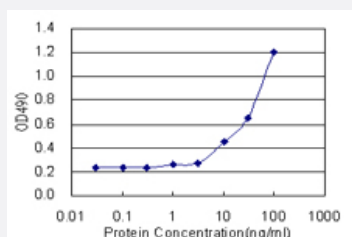


LZTFL1 (Human) Matched Antibody Pair

Catalog # H00054585-AP11

Size 1 Set

Applications



Sandwich ELISA detection sensitivity ranging from 3 ng/ml to 100 ng/ml.

Specification

| | |
|--------------------------------------|--|
| Product Description | This antibody pair set comes with a matched antibody pair to detect and quantify the protein level of human LZTFL1. |
| Reactivity | Human |
| Interspecies Antigen Sequence | Mouse (90); Rat (92) |
| Quality Control Testing | Standard curve using recombinant protein (H00054585-P01) as an analyte. Sandwich ELISA detection sensitivity ranging from 3 ng/ml to 100 ng/ml. |
| Supplied Product | Antibody pair set content: 1. Capture antibody: rabbit MaxPab® affinity purified polyclonal anti-LZTFL1 (100 ug) 2. Detection antibody: mouse monoclonal anti-LZTFL1, IgG2a Kappa (20 ug) *Reagents are sufficient for at least 1-2 x 96 well plates using recommended protocols. |
| Storage Instruction | Store reagents of the antibody pair set at -20°C or lower. Please aliquot to avoid repeated freeze thaw cycle. Reagents should be returned to -20°C storage immediately after use. |

Applications

- ELISA Pair (Recombinant protein)

[Protocol Download](#)

Gene Info — LZTFL1

| | |
|---------------|-----------------------|
| Entrez GeneID | 54585 |
|---------------|-----------------------|

| | |
|-----------|--------|
| Gene Name | LZTFL1 |
|-----------|--------|

| | |
|------------|----------|
| Gene Alias | FLJ36386 |
|------------|----------|

| | |
|------------------|--|
| Gene Description | leucine zipper transcription factor-like 1 |
|------------------|--|

| | |
|---------|------------------------|
| Omim ID | 606568 |
|---------|------------------------|

| | |
|---------------|---------------------------|
| Gene Ontology | Hyperlink |
|---------------|---------------------------|

| | |
|--------------------|---|
| Other Designations | - |
|--------------------|---|