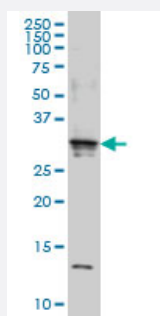


# SCAND2 monoclonal antibody (M01), clone 7B12

Catalog # H00054581-M01

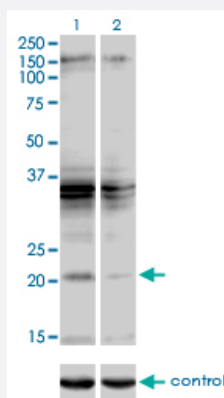
Size 100 ug

## Applications



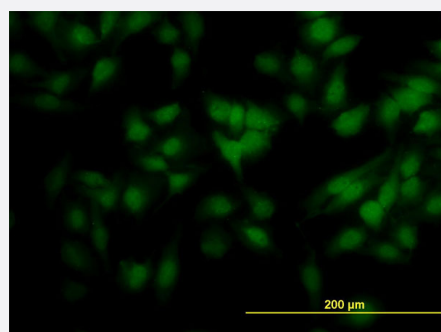
### Western Blot (Cell lysate)

SCAND2 monoclonal antibody (M01), clone 7B12 Western Blot analysis of SCAND2 expression in HeLa S3 NE ( Cat # L013V3 ).



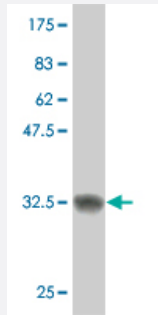
### RNAi Knockdown (Antibody validated)

Western blot analysis of SCAND2 over-expressed 293 cell line, cotransfected with SCAND2 Validated Chimera RNAi ( Cat # H00054581-R01V ) (Lane 2) or non-transfected control (Lane 1). Blot probed with SCAND2 monoclonal antibody (M01), clone 7B12 (Cat # H00054581-M01 ). GAPDH ( 36.1 kDa ) used as specificity and loading control.



### Immunofluorescence

Immunofluorescence of monoclonal antibody to SCAND2 on HeLa cell.  
[antibody concentration 10 ug/ml]



Western Blot detection against Immunogen (32.56 KDa) .

## Specification

<b>Product Description</b>	Mouse monoclonal antibody raised against a partial recombinant SCAND2.
<b>Immunogen</b>	SCAND2 (NP_071333, 1 a.a. ~ 62 a.a) partial recombinant protein with GST tag. MW of the GST tag alone is 26 KDa.
<b>Sequence</b>	MAVAVDQQIQTPSVQDLQVLEEDSHWEQEISLQGNYPGPETSCQSFWHFRYQEASRPREA
<b>Host</b>	Mouse
<b>Reactivity</b>	Human
<b>Isotype</b>	IgG2a Kappa
<b>Quality Control Testing</b>	Antibody Reactive Against Recombinant Protein. Western Blot detection against Immunogen (32.56 KDa) .
<b>Storage Buffer</b>	In 1x PBS, pH 7.4
<b>Storage Instruction</b>	Store at -20°C or lower. Aliquot to avoid repeated freezing and thawing.

## Applications

- Western Blot (Cell lysate)

SCAND2 monoclonal antibody (M01), clone 7B12 Western Blot analysis of SCAND2 expression in Hela S3 NE ( Cat # L013V3 ).

[Protocol Download](#)

- Western Blot (Recombinant protein)

[Protocol Download](#)

- ELISA

- RNAi Knockdown (Antibody validated)

Western blot analysis of SCAND2 over-expressed 293 cell line, cotransfected with SCAND2 Validated Chimera RNAi ( Cat # H00054581-R01V ) (Lane 2) or non-transfected control (Lane 1). Blot probed with SCAND2 monoclonal antibody (M01), clone 7B12 (Cat # H00054581-M01 ). GAPDH ( 36.1 kDa ) used as specificity and loading control.

[Protocol Download](#)

- Immunofluorescence

Immunofluorescence of monoclonal antibody to SCAND2 on HeLa cell. [antibody concentration 10 ug/ml]

## Gene Info — SCAND2

Entrez GeneID [54581](#)

GeneBank Accession# [NM\\_022050](#)

Protein Accession# [NP\\_071333](#)

Gene Name SCAND2

Gene Alias -

Gene Description SCAN domain containing 2 pseudogene

Omim ID [610417](#)

Gene Ontology [Hyperlink](#)

**Gene Summary** The SCAN domain is a highly conserved, leucine-rich motif of approximately 60 aa originally found within a subfamily of zinc finger proteins. This gene belongs to a family of genes that encode an isolated SCAN domain, but no zinc finger motif. Functional studies have established that the SCAN box is a protein interaction domain that mediates both hetero- and homoprotein associations, and maybe involved in regulation of transcriptional activity. Multiple transcript variants which encode the same isoform but differ only in their 3' UTRs, and another variant which encodes a distinct isoform have been described for this gene.

Other Designations -